

FAQ List for VWGRCLite and VWGRCLite Applications

Subject focal points:

Information source for
VOLKSWAGEN Development Partner

Order/Changes

VALIDAT Basis/Professional

VX1/PX1

License Manager

Contact

GRC 10.2.x - What's new

Known Problems

© Copyright **T-Systems International GmbH** 2024

All rights reserved.

Version 8.3 Released as of Oktober2024

Status: released

Reproduction of any kind, also in extracts, is not permitted without the approval of T-Systems International GmbH

Created for:

T-Systems International GmbH

VWGRCLite-Service

Maybachweg 5, 38446 Wolfsburg

+49 375 60619919 (Tel.)

+49 391 580248942 (Fax)

E-Mail: cax-service@t-systems.com

Authors:

Annette Lüer, T-Systems International GmbH

Sabine Itani, T-Systems International GmbH

Thomas Hallmann, T-Systems International GmbH

The information in this document is published without regard for a possible patent protection. Product names are used without regard for free usability. Many hardware and software names are concurrently registered trademarks or should be regarded as such.

Change history

Version	Status	Editor	Modifications / Comments
7.0	08.2021	Lüer	Revised as VWGRCLite9. 2. x; 2. 1 und 2.2.1 revised; 2. 3 OEM Startpart omitted; 3. 3 CADGlyph added; 4. 3. 2 Note Mona App added; 3.3 and 4. 3. 12 new AVB Tools NF added; 5. 1 and 7 updated; 12, 13 and 14.2.1 omitted
7.1	05.2022	Lüer	4.2 + 4.3.1 reformulated; 5.1, 8 revised; 7,12 updated
7.2	05.2022	Lüer	5.2 extended; 8 revised
8.0	10.2023	Lüer	VWGRCLite10.2.x – whole chapter 2, 8, 12 revised; 3.1, 3.4 Text alignment; 4.3 added; 5 Set Special Apps added/ Short descriptions restructured; 11 omitted
8.1	07.2024	Lüer	chapter 6.1, 8, 10,12, 14 revised (VWGRCLite 10 Plus)
8.2	08.2024	Lüer	chapter 8 correction
8.3	10.2024	Lüer	GRC-3414 - Set PX1 and VX1 licenses as prerequisite for VALIDAT: revised 3.5.1, 3.8, 7, added 12.3 , 6.3.1 omitted; Text alignment: 2, 3.1, 3.5.1, 3.6.2, 3.6.4, 3.9

Table of Content

1.1	Audience.....	7
1.2	Note for the FAQ List	7
1.3	Agreements/Abbreviation for this document.....	7
2	Important information sources	8
2.1	ONE.Konzern Business Plattform (once VWGroupSupply).....	9
2.2	T-Systems ServiceNet	10
2.2.1	Website ServiceNet “VOLKSWAGEN GROUP”	10
2.2.2	ServiceNet account - Registration and “Forgot your password?”	11
2.2.3	ServiceNet - Short links.....	12
3	VWGRCLite applications / VX1 licenses: Order, delivery, changes	13
3.1	T-Systems order process.....	13
3.2	Support Package	13
3.3	Premium Contract Support	14
3.4	License type – Nodelocked / Floating / Site / Corporate.....	14
3.5	VX1	15
3.5.1	VX1 License	15
3.5.2	VX1 Software.....	15
3.6	Technical specifications for license order / license.....	15
3.6.1	Technical specifications for VWGRCLite Application licenses	15
3.6.2	Technical specifications for a license change of VWGRCLite Applications.....	16
3.6.3	Technical specifications for VX1 licenses – DSLS (Dassault Systèmes License Server).....	16
3.6.4	Technical specifications for VX1 license change.....	16
3.7	License Switch (VWGRCLite Application and VX1).....	17
3.8	Purchasing of PX1 and VX1 License.....	17
3.8.1	Process of the VX1 order:.....	17
3.9	VWGRCLite – Enhancement of license feature	18
4	Licensed VWGRCLite Applications.....	18
4.1	License-Bundle.....	18
4.1.1	Standard package	18
4.1.2	Engineering package	19
4.2	Licensed VWGRCLite Single applications.....	19
4.3	VWGRCLite Set of Special Applications	19
5	Short descriptions VWGRCLite Applications	20

5.1	VWGRCLite Applications (contained in the VWGRCLite Base package)	20
5.1.1	VALIDAT (Basis/Professional).....	20
5.1.2	KVS PlugIn.....	20
5.1.3	NTool	20
5.1.4	Netline V5	21
5.1.5	OutGen.....	21
5.1.6	RPS (ReferenzPunkteSystem-Applikation).....	21
5.1.7	LTA (Loch-Tool-Application).....	21
5.2	VWGRCLite Additional Applications.....	22
5.2.1	AVB Tools NF.....	22
5.2.2	BoM2KSL.....	22
5.2.3	DoLittle V5.....	22
5.2.4	CADGlyph.....	23
5.2.5	VWMetho	23
5.3	VWGRCLite Set of Special Applications	23
5.3.1	Netline V5	23
5.3.2	3DZP.....	23
5.3.3	VWGVARTool.....	24
5.3.4	VWGSpiegelteilMakro (VW Chassis).....	24
5.3.5	VWGPrintframes.....	24
5.3.6	VWGBendTables.....	24
5.3.7	VWGVZStempel.....	24
5.3.8	VWNSectionMe	25
5.3.9	VWNKonstruktionsassistent.....	25
5.3.10	VWGSPI (SPICA)**	25
5.3.11	VWGKOLOS**	25
5.3.12	VWGWRL**	25
6	VALIDAT	25
6.1	Difference VALIDAT Basis / VALIDAT Professional.....	26
6.2	Benefit of VALIDAT-Professional license	27
6.2.1	Check Result - handling and information content of standard check window enlarged	27
6.2.2	Automated VALIDAT Check of CATIA Data	28
6.2.3	VALIDAT Professional License released automatically.....	28
6.2.4	VALIDAT CATDua - extra Clean Option.....	29

6.3	VALIDAT structure analysis.....	29
7	Benefit of VX1 / PX1 license.....	30
8	Release of operating system / CATIA V5-6 combinations.....	30
9	License manager FlexNet.....	30
10	VWGRCLite Web-Installer	31
11	Contacting the VWGRCLite Service – Service Desk.....	31
11.1	You direct an inquiry to VWGRCLite Service, by telephone or email	31
11.2	Reporting errors/problems related to VWGRCLite.....	32
11.3	Procedure for lodging a request	32
12	GRC 10.2.7.x – What’s new	33
12.1	2024_002: Information about VWGRCLite 10.2.7.1.0 GoLive.....	33
12.2	2024_005: New VWGRCLite Base Package 10.2.7.2.1 available	33
12.3	2023_014: Important Information about VWGRCLite 10 Plus Prerequisites.....	34
13	Known Problems.....	35
13.1	Known Problems - VWGRCLite.....	35
13.2	Known Problems - Web-Installer	35
13.3	File %TEMP%\inst_grx.lock.....	35
13.4	Installation on existing VWGRCLite installation.....	35
14	VWGRCLite	36
14.1	VWGRCLite – requirements and prerequisites.....	36
14.2	VWGRCLite – Tips and Tricks.....	37
14.2.1	VWGRCLite – Support Mail	37
14.2.2	VWGRCLite – Support Mail without Outlook installation.....	37

1 Introduction

This FAQ list provides answers to various topics, e.g., the process for ordering licenses, or the CATIA licenses VX1 / PX1 and functional differences between Validat Basis and Validat Professional. No classic question/answer flow is used, but the corresponding treatise of frequently asked question is located under a topic.

Topic focal points:

Important question sources

Licenses – Purchase order, Delivery, Change

VWGRCLite

VWGRCLite Applications

Functional differences VALIDAT Basis / VALIDAT Professional

VX1- / PX1

License manager

Contact

1.1 Audience

This document is directed to the VOLKSWAGEN development partners who are interested in the VWGRCLite and the containing CATIA additional applications.

1.2 Note for the FAQ List

This document does not demand for completeness and response to all the questions. Please contact us in case of more special questions, suggestion or ambiguities.

1.3 Agreements/Abbreviation for this document

Abbreviation	Meaning
FAQ	Frequently Asked Questions
ServiceNet	T-Systems ServiceNet The Automotive/Manufacturing Competence Center The “VW Group” enter page can be found at: https://vwgroup.t-systems.com e.g., for topics like the VWGRCLite, license orders
ONE.Konzern Business Plattform (onceVWGroupSupply)	VOLKSWAGEN Web Portal for Partner Link: http://www.vwgroupsupply.com (Extra access required)
VW GRC	Volkswagen Group Reference CATIA
VWGRCLite	Volkswagen Group Reference CATIA Lite Defines the CATIA environment at development partner side about participating brands, departments and additional applications.

2 Important information sources

Where can I get information as a VOLKSWAGEN development partner?

With the VOLKSWAGEN contact person in each project

Partner Portal of the VOLKSWAGEN brands

Partner information presentations of the VOLKSWAGEN brands

T-Systems ServiceNet

The VOLKSWAGEN contact person should also clarify the following well in advance along with the other topics. E.g.:

- Access to the ONE.Konzern Business Plattform (once VWGroupSupply)
- Skill specification to the designer
- Necessary requirement of the VOLKSWAGEN additional applications
- VOLKSWAGEN norms/design standards as per which are used

Please note the announcements and proclamations in the partner portals of the VOLKSWAGEN brands and in T-Systems ServiceNet. You can register there for newsletter to some extent.

It is also recommended to see the partner information presentations of the respective brands relevant to you. Except the “first-hand information” you can also address the suggestions and questions directly on the partner information presentations.

Software, documentation, and a few Video documents provided for the VWGRCLite and partially for the VWGRCLite applications. This should be provided to the user and read if necessary.

As the use of the VWGRCLite applications is not self-explanatory, it is recommended that the “new” users undergo corresponding trainings (e.g. for: VOLKSWAGEN coaching, AUDI academy).

2.1 ONE.Konzern Business Plattform (once VWGroupSupply)

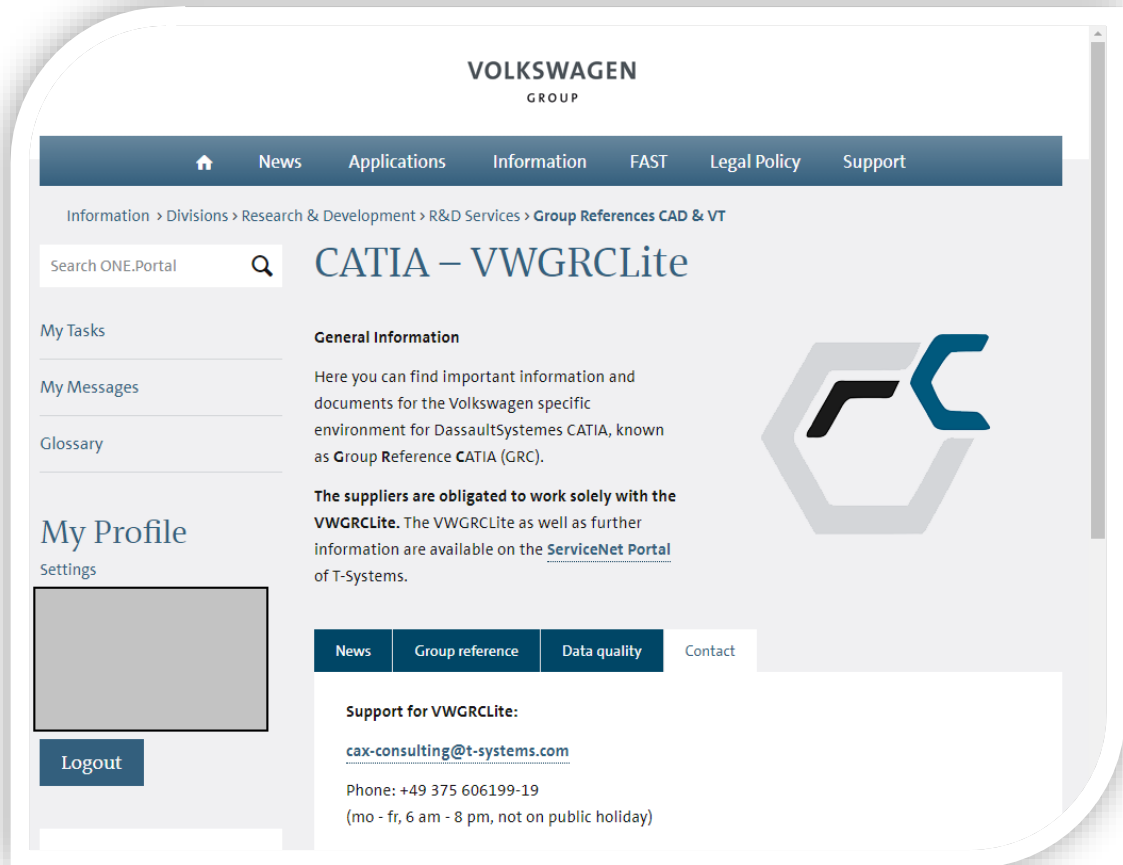
VOLKSWAGEN Web Portal for VOLKSWAGEN Partner

Link: <http://www.vwgroupsupply.com>

Please note in the VWGroupSupply the announcements/proclamations.

Access is required for the VWGroupSupply that should be assigned via VOLKSWAGEN.

After the successful login you can access the following [page](#), e.g.:



The screenshot displays the Volkswagen Group ONE Portal interface. At the top, the 'VOLKSWAGEN GROUP' logo is centered. Below it is a navigation bar with links for Home, News, Applications, Information, FAST, Legal Policy, and Support. The breadcrumb trail reads: 'Information > Divisions > Research & Development > R&D Services > Group References CAD & VT'. A search bar labeled 'Search ONE.Portal' is on the left. The main heading is 'CATIA - VWGRCLite'. The left sidebar contains 'My Tasks', 'My Messages', 'Glossary', and 'My Profile' with a 'Settings' link and a 'Logout' button. The main content area features a 'General Information' section with text about CATIA (GRC) and a note that suppliers must work with VWGRCLite. A navigation bar below this section includes 'News', 'Group reference', 'Data quality', and 'Contact'. The 'Support for VWGRCLite' section provides contact details: 'cax-consulting@t-systems.com', 'Phone: +49 375 606199-19', and '(mo - fr, 6 am - 8 pm, not on public holiday)'. A large blue and black logo is on the right side of the page.

In the area "R&D Services" you will find e. g. information about CATIA at VOLKSWAGEN, like "3D drawing-less process", too.

2.2 T-Systems ServiceNet

What can I find in ServiceNet?

The T-Systems ServiceNet provides following:

- Information for ordering the VWGRCLite and VWGRCLite application licenses and VX1 licenses (e.g., contract conditions, license model-dependent price information, order pages)
- Documentation of the currently released VWGRCLite and VWGRCLite applications
- Web-Installer (Software for downloading the currently released VWGRCLite and VWGRCLite applications)
- Suitable license manager (FlexNet) for the VWGRCLite and VWGRCLite applications
- Current VX1 software for download
- Additional information for the currently released VWGRCLite applications (e.g., current application versions, integration guidelines)

2.2.1 Website ServiceNet “VOLKSWAGEN GROUP”

The start page for the VOLKSWAGEN Group Reference CATIA Lite (VWGRCLite) is given in ServiceNet in the following link: <https://vwgroup.t-systems.com>.

In the public area you find all relevant about the topic [License Order](#) (application licenses, support, etc.), plus many important additional Information around the Volkswagen Group Reference CATIA (GRC).

The non-public area of ServiceNet contains information and documentation of the currently released [VWGRCLite](#) Packages.

DE | EN Anmelden

T Systems Let's power higher performance

≡ Menu

Welcome

AS A PARTNER OF THE VOLKSWAGEN GROUP, YOU WILL GET HERE THE NECESSARY INFORMATION ABOUT DEVELOPMENT ENVIRONMENTS, AS WELL AS RELEASED SOFTWARE OF STANDARD ENVIRONMENTS AND THEIR APPLICATIONS.

CATIA V5-6R2022

For the currently released VWGRCLite 10 you will find additional information about the CATIA V5-6 basic installation on this page. Find out more...

VWGRCLite

(Login required) Due to the increasingly complex dependencies in the Volkswagen CATIA V5 partner environments, Volkswagen has decided to merge many of the previously necessary installation components into a...

T-Systems Ordering Process

News

2.2.2 ServiceNet account - Registration and "Forgot your password?"

You have not yet registered for our Service Portal "VWGRCLite ServiceNet"?

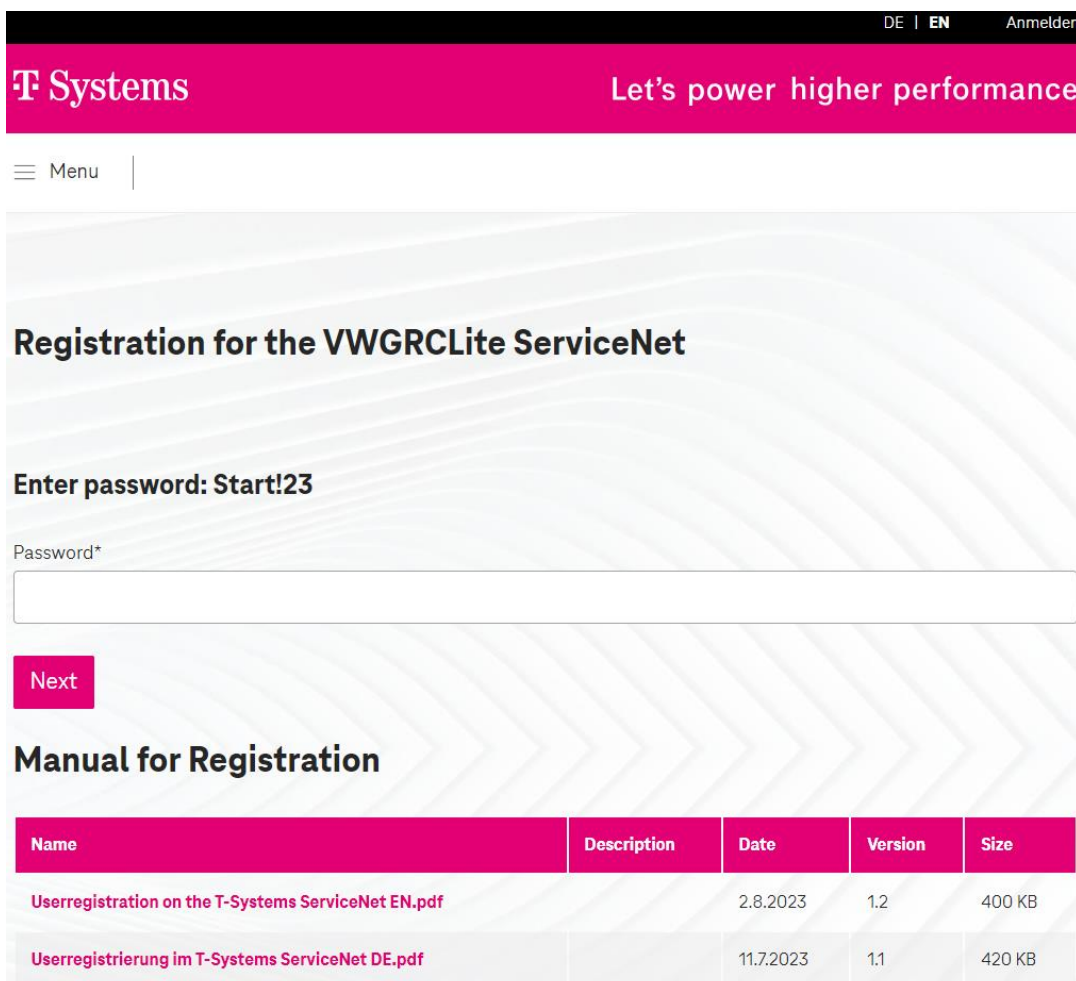
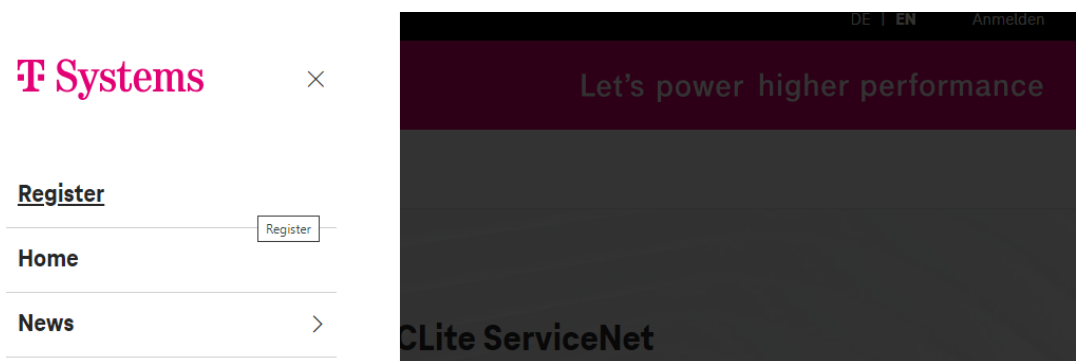
Due to technology change, a new registration is required.

Either go to <https://wvgroup.t-systems.com> and select "Register" from the menu, or you use the direct access to register - <https://wvgroup.t-systems.com/registration>.

The registration procedure is described in detail in the "Userregistration on the T-Systems ServiceNet EN" document.

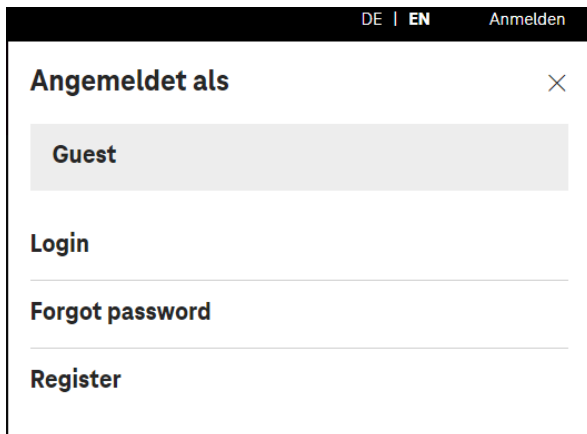
Please notice:

- The entered E-Mail-Address is equal to your account.
- Access is granted only after a contract for a VWGRCLite and/or VWGRCLite application has been concluded.



Name	Description	Date	Version	Size
Userregistration on the T-Systems ServiceNet EN.pdf		2.8.2023	1.2	400 KB
Userregistrierung im T-Systems ServiceNet DE.pdf		11.7.2023	1.1	420 KB

By using link or button “Forgot your password?” a new password could be generated if you are already registered in the new ServiceNet.



2.2.3 ServiceNet - Short links

You could find an overview of all Short links around VWGRCLite at:

<https://vwgroup.t-systems.com/shortlinks>

3 VWGRCLite applications / VX1 licenses: Order, delivery, changes

3.1 T-Systems order process

You can create the proposal for your own by filling out the corresponding contract. Hereby you will receive a binding price information from us. This is not an internet order process.

Attention! To create the license T-Systems need the signed Order Form sent by you via mail or fax.

Please find a detailed description of the ordering process with the following link

<https://vwgroup.t-systems.com/orderprocess>

Please send the contract via mail to cax-service@t-systems.com or via fax to our number **+49 391 580 248 942**

3.2 Support Package

T-Systems provides a support package for your current license period based on the CATIA V5-6 environment of the brand Volkswagen. This allows you or your ICT to retrieve support services when facing problems.

You can order a support package for €400 directly when ordering a license. For new customers the order of the support package is mandatory. Orders of new customers without a support package will not be processed!

The support package contains the following services:

- Support for the installation of VWGRCLite via e-mail or at the discretion of T-Systems via the telephone (up to a maximum of 4 hours of support per contract year).
- Change of licenses for technical reasons permitted once per contract year.

If you as a regular customer wish to order the support package during your current license period, the current license must be renewed by 1 year as well. The remaining time of the old license will be credited against.

3.3 Premium Contract Support

T-Systems provides a premium contract support for €200 excl. VAT.

The premium contract support contains the following services:

- Contract related consulting by our consultants – maximum of 1 hour
- Determination and recording of the necessary machine data
- Creating and sending of the contract form via e-mail
- If necessary, login to the company-owned order tool

This premium contract support applies to the following products:

- AVB Tools NF
- BoM2KSL
- CADGlyph
- DoLittle
- Engineering Package
- Standard Package
- VALIDAT
- VWMetho (as well as ARBRICH, FLAN and SURPRESS)

3.4 License type – Nodelocked / Floating / Site / Corporate

Licensing is restricted respectively to one place of use with Nodelocked or Floating licenses. A place of use is defined by the business premises at the postal address stated in the contract form.

Nodelock licenses are issued to a certain physically workstation. The usage is restricted to that physically machine. The quantity of concurrent license users is 1.

Floating licenses are issued to 1 physically license server or 3 physically license servers (triad). They are not restricted to a certain workstation. The quantity of concurrent users is determined by the quantity of ordered licenses.

An Initial Floating license is a Floating license of a CA application with 1 user on 1 physically license server or a physically triad at 1 place of use. An Additional Floating license is an additional license to the Initial Floating License of a CA application on the same physically license server or physically triad at the same place of use (same CPU-ID).

Site licenses are Floating licenses. The provided license file will contain 999 Floating licenses.

Corporate licenses are Floating licenses. The provided license file will contain 999 Floating licenses. The use of Corporate licenses is not limited to one site, but to the number of sites specified on the order form.

In the event of an infringement of the license agreement, no support will be provided.

Hint:

Except for nodelocked licenses, the FlexNet License Manager is required for all licenses.

The Volkswagen released FlexNet software and documentation is provided on the [FlexNet ServiceNet page](#).

The documentation also contains information about Nodelocked licenses.

3.5 VX1

3.5.1 VX1 License

The VX1 license is a CATIA V5-6 license. With the VX1 software plus license, Volkswagen extends the range of functions of the CATIA V5-6 PX1 product, i.e., the VX1 license requires a PX1 license and is otherwise not usable (not granted).

The VX1 license together with the PX1 license offers additional functions for special Volkswagen applications (NTool, KVS Plugin, LTA, RPS, Validat Basic and Validat Professional).

In addition to the VX1 license, you need a PX1 license to be able to use the model Structure analyses of the CATIA V5-6 models in VALIDAT (Basic and Professional), in KVS-Plugin and in NTOOL.

The VX1 license is provided royalty-free for use with VWGRCLite. When ordering licenses for the VWGRCLite applications, the information about the VX1 license order is also requested for the corresponding products.

VWGRCLite-Service do only the logistical service for the VX1 license, there is no further support.

The PX1 license is subject to a fee and is not sold via VWGRCLite-Service. The PX1 license can be purchased from Dassault Systèmes (ask your CATIA sales partner).

Important notes:

- No "Emergency Key Procedure" has been agreed between VWGRCLite-Service and Volkswagen for the VX1 licenses.
- A processing fee is charged for changes to VX1 licenses.
- License import is possible till four weeks after the license was issued.

3.5.2 VX1 Software

The VX1-Software provides functionalities for the VWGRCLite applications in CATIA V5-6.

If the VX1-Software is not installed, some of the VWGRCLite applications do not run.

The VX1-Software can be downloaded at the following location: <https://wvgroup.t-systems.com/vx1>

3.6 Technical specifications for license order / license

How do I determine the technical specifications for the license order?

3.6.1 Technical specifications for VWGRCLite Application licenses

The VWGRCLite and the VWGRCLite Applications are FlexNet (company FLEXERA SOFTWARE) license supported. We require some technical specifications from your computer (in case of nodelock licenses) or from your FlexNet Server (in case of Floating licenses) so that your licenses can be created.

WIN: ipconfig /all (MAC address of network card)
AIX: uname -m
redhat: ipconfig /all (MAC address of network card)

In case multiple addresses are output: Please use only the physical address of the Ethernet adapter LAN-Connection as CPU-ID.

3.6.2 Technical specifications for a license change of VWGRCLite Applications

If a license switch is necessary, due to a server change e.g., we will require following information:

- CPU-ID of the new server
- CPU-ID of the current server
- Products/Licenses related to this change

It would be helpful to send the old license file, or the license mail we sent before.

The change form is available for download in the ServiceNet at topic "[License Order](#)" under heading "Ordering Process".

Please send the signed form to our Servicedesk with email address cax-consulting@T-Systems.com or our fax number +49 391 580 248 942.

3.6.3 Technical specifications for VX1 licenses – DSLS (Dassault Systèmes License Server)

CATIA only supports DSLS. The Software and additional information are available on the Dassault Systems website: (<https://www.3ds.com/support/>).

VX1 is CATIA V5-6 software and DSLS licensed. Technical specifications of your computer (in case of Nodelock licenses) or of your DSLS server (in case of floating licenses) is required so that VX1 licenses can be created.

Under the following link you can find a tool for determining the VX1 DSLS ID:

<http://www.3ds.com/terms/software-keys/?xtmc=DSLicTarget&xtcr=1>

under "LICENSE KEY TOOLS"

3.6.4 Technical specifications for VX1 license change

If a license switch should be necessary due to, for example, a server change, we will require following information:

- DSLS ID and OS level of the new server
- DSLS ID and OS level of the current server

It would be helpful to send the old license file or license dispatch mail.

The change form is available for download in the ServiceNet at topic "[License Order](#)" under heading "Ordering Process".

Please send the signed form to our Servicedesk with email address cax-consulting@T-Systems.com or our fax number +49 391 580 248 942.

3.7 License Switch (VWGRCLite Application and VX1)

Processing a subsequent license change (so-called license switch) for technical reasons permitted once per year for VOLKSWAGEN VWGRCLite or VX1 licenses costs 195 € net.

To assign a license switch, please use our change form from the ServiceNet. The change form is available for download in the ServiceNet at topic "[License Order](#)" under heading "Ordering Process".

Please send the signed form to our Servicedesk with email address cax-consulting@T-Systems.com or our fax number +49 391 580 248 942.

The change process will be charged per incoming FAX. This change can consist of multiple licenses (VWGRCLite Applications, VX1) which are part of this license switch order.

If the VX1 licenses should be changed several times during its validity period, then only the respective processing fee of the change procedure is levied.

If the existing VX1 license expires regularly, it can be ordered on request free of cost. Thereby, a new server can be entered.

3.8 Purchasing of PX1 and VX1 License

Where do I get the PX1 license? How much does the PX1 license cost?

Where do I get the VX1 license? How much does the VX1 license cost?

You can purchase the PX1 license from Dassault, or a Dassault Business Partner. The PX1 license is not free of charge.

As a VOLKSWAGEN development partner, you can obtain the VX1 License free of cost through T-Systems if a contract for a VWGRCLite Application has been already concluded (Engineering Package, Standard Package, VWGValidat Basic or VWGValidat Professional).

3.8.1 Process of the VX1 order:

What happens with a VX1 order?

T-Systems initiates the generation of the license once weekly with Dassault Systemes. When T-Systems receive the license from Dassault Systemes, it will be delivered immediately to the development partner.

Note:

Dassault generates the VX1 license only if T-Systems provide the following data:

Company and contact person
Street / house number
postal code, city
Email address and
telephone number.

By ordering, you authorize T-Systems to share this information with Dassault.

Note:

A VX1 license requires a PX1 license. A VX1 license without the PX1 license does not bring any functionality.

To be able to use the VX1 license, the VX1 software should also be installed at the workstation.

3.9 VWGRCLite – Enhancement of license feature

To use the VWGRCLite, a special FlexNet license feature (VWGRCLITE) is required. VWGRCLite Application license (e.g., VALIDAT, Standard Package or Engineering Package) is delivered with the additional VWGRCLite license with the feature name VWGRCLITE. The VWGRCLite license feature is free of costs and is necessary for the use of the VWGRCLite GUI.

Separate ordering of VWGRCLite licenses is not intended.

For more information according to VWGRCLite please have a look at <https://vwgroup.t-systems.com/vwgrclite>

4 Licensed VWGRCLite Applications

VOLKSWAGEN Applications-Bundle and VOLKSWAGEN single applications are available in T-Systems ServiceNet.

The applications in the packages provided here and the single applications are the efficient help material for adhering to the VOLKSWAGEN norms/construction standards in the CAD system CATIA. The adherence to the VOLKSWAGEN norms/construction standards forms the basis for the coordination with the VOLKSWAGEN group.

Where will I get information about the required VWGRCLite applications?

Please coordinate with your VOLKSWAGEN contact person regarding the requirement of the VOLKSWAGEN applications. It can be different depending on your specific task.

4.1 License-Bundle

Why do two License-Bundle existing?

What is the difference between License Bundle “Standard Package” and “Engineering Package”?

Is it possible to order individual components of a package?

The frequently required applications have been compiled in the packages. There are differences in case of the VOLKSWAGEN brands. Thus, it came about that, for example, the specification for the using the Engineering Package has been prepared by AUDI for the development.

The contextual difference between the Engineering Package and Standard Package is that the Standard Package does not include VALIDAT Basis.

Except for VALIDAT, no single components of a bundle can be ordered separately.

4.1.1 Standard package

The standard package consists of:

- KVS-PlugIn
- NTool
- Netline V5
- OutGen
- RPS
- LTA
- VTA

4.1.2 Engineering package

The engineering package consists of:

- VALIDAT Basis
- KVS-PlugIn
- NTool
- Netline V5
- OutGen
- RPS
- LTA
- VTA

4.2 Licensed VWGRCLite Single applications

The following products are available individually or in addition to Standard / Engineering package:

- BoM2KSL
- DoLittle
- VALIDAT V5 Basis
- VALIDAT V5 Professional
- VWMetho (consists of "ABBRICH", "FLAN" and "SURPRESS")
- VWGCADGlyph
- AVB Tools NF

4.3 VWGRCLite Set of Special Applications

The following products can be ordered combined in packages. The rental of an Engineering, Standard or other package is not mandatory for this.

- Netline V5 (Base package)
- 3DZP (FtaCaptureAid)
- WGVarTool
- WGPrintframes
- WGSpiegelteilMakro (VW Chassis)
- WGBendTables
- WGVZStempel
- VWNSectionMe
- VWNKonstruktionsassistent
- WGSPI (SPICA)**
- WVKOLOS**
- WGWRL**

Individual approval by Volkswagen AG is required for use of the applications marked with **.

5 Short descriptions VWGRCLite Applications

At what can the VWGRCLite applications support me?

5.1 VWGRCLite Applications (contained in the VWGRCLite Base package)

5.1.1 VALIDAT (Basis/Professional)

VALIDAT assures adherence to the data quality corresponding to the VOLKSWAGEN Norm 01059 part 6. Your CATIA V5-6 documents are checked with some company-specific criteria for the adherence to this norm.

The quality of the changed data is evaluated as per the unique criteria with VALIDAT as the check program executes a control of the created CAD data as per the VDA recommendation 4955/4. Thus, the quality of the CAD elements and element connections can be determined as per the defined check criteria. According to the check requirements tolerance values can be set and saved. The graphical representation of the check results enables quick and target-oriented search of different areas and elements.

VALIDAT is available in the expansion stage: Basis and Professional. For details see ["Difference VALIDAT Basis / VALIDAT Professional"](#)

5.1.2 KVS PlugIn

The KVS PlugIn provides – like toolbar integrated in CATIA – efficient functions for the structure check of CAD documents, for creating VOLKSWAGEN TAR archives and for saving the data in KVS.

PX1 and VX1 license are additionally required for the KVS PlugIn.

Note about KVS MonaApp:

The app/application MonaApplet has been replaced by MonaApp during the technology change of JAVA-applet to JAVA OpenJDK.

To get the MonaApp please log into the KVS PFN and download the current version from the link "Download Mona App".

The support is performed exclusively through the KVS team, the corresponding support information is located on the KVS page after the log in.

5.1.3 NTool

The VWGRCLite Application name tool V5 (NTool) supports the CAD user while giving standardized document names as per the instructions of the VOLKSWAGEN group. The user will efficiently manage the existing and new documents for the correct naming through screens and menus. The naming conventions saved in the profile can be customized according to the individual requirements. With the corresponding CATIA licenses, NTool continuously supports the avoidance of incorrect links.

PX1 license is required for several NTool functions (see also ["Benefit of VX1 / PX1 license"](#)).

5.1.4 Netline V5

Netline V5 provides the CATIA users with a function using which netlines can be created in the in CATIA V5-6 CATDrawings as well as in the ground level and in any section views with the corresponding caption and with the adjustable netlines distance. The application netline provides functions for creating, modifying and deleting the netgrids. The net to be created is using the line type and line width, line distance, text size and text position as well as the scaling in a panel. The view level is determined automatically and the netgrid is created within the earlier indexed points as connection.

5.1.5 OutGen

Outgen generates interactive menu-driven process chain adapter according to the method instruction of VOLKSWAGEN group.

5.1.6 RPS (ReferenzPunkteSystem-Applikation)

RPS is an application to support in CATIA V5-6 the process for the generation of reference elements. Therefore, special RPS features are generated and stored in CATIA models. These features can also be displayed in a table.

The application RPS is released since the GRC4.1.1. Basically, you should check with your VOLKSWAGEN contacts which CAAs and which methodology are to be used. In particular tune which RPS is allowed to be used, the RPS macro or the CAA-RPS.

5.1.7 LTA (Loch-Tool-Applikation)

LTA is an application to support in CATIA V5-6 the process for the generation of LTA elements. Therefore, special LTA features are generated and stored in CATIA models. These features can also be displayed in a table.

5.2 VWGRCLite Additional Applications

5.2.1 AVB Tools NF

AVB Tools NF is a collection of programs that support the design process in plant and fixture construction. AVB Tools NF includes the following applications:

Hole Checker

According to statistics, drilling errors are most common in constructions. The task of the Hole Checker module is to check the holes and hole groups present in the design for compliance with standardization and company specifications, and then document them by creating a log.

Bill of materials

The module is used to generate BOMs for assemblies and the main BOM. The CATIA additional application AVB Tools NF provides all the necessary functions for compliance with company specifications for BOMs. Other functions include the creation of focal templates, detailed drawings and the ZSB drawing.

Utilities

Additional applications that support the designer in their daily work.

Manage project settings

Another function is project management for BOM creation, in which releases are defined and managed project-specifically.

The program works on a knowledge-based basis. Most decisions are stored in a database in the form of rules.

5.2.2 BoM2KSL

The VWGRCLite Application “BoM2KSL” provides all essential functions for compliance of the company specifications for parts lists and transfers the created parts list to KSL as background process via XML.

5.2.3 DoLittle V5

DoLittle is a system for creating multilingual CAD-constructions.

It supports the constructor online in case of multilingual text entry in the CAD-systems based on a central company-specific collection of design texts.

With DoLittle, T-Systems has the suitable solution platform ready for the development partner of VOLKSWAGEN group: a system for supporting the constructor in case of creating multilingual CAD-constructions based on a company-specific text catalogue. The central data base records a lot of text entries; unavailable translations can be directly asked for in the system.

Even if the DoLittle-module is independent of the set CAD-system, the specific integration offers special advantages in the leading platforms CATIA® and CREO. DoLittle supports the language directions “German – English”, “English - German”.

We recommend for more Information about Dolittle the documents “DoLittle Next Generation Onboarding”, “DoLittle Getting Started” and “Dolittle User Manual”. Please find these documents as a Zip-archive for download at <https://vwgroup.t-systems.com/download-dolittle> under section “DoLittle Documentation”.

5.2.4 CADGlyph

CADGlyph is a tool for three-dimensional text generation in CATIA V5-6. The text can be generated on surfaces with any curvature. The text is associative and always adjusts to the curve selected, even if the text includes multiple lines. The major advantage of this is that the text is generated with tangentially constant surfaces that are reduced to a minimum. This opens more possibilities and improves the performance when compared to DXF.

5.2.5 VWMetho

The VWGRCLite Application "VWMetho" consists of the individual elements "ABBRICH"; "FLAN" and "SURPRESS".

ABBRICH supports the definition/analysis of restriction directions. According to the border angles specified by the user, one or if this is not possible under the compliance of permissible angle, more restriction directions are suggested for the selected restriction edges.

The selected restriction edges are analyzed and are marked as IO, warning or critical accordingly. The result of the analysis can be saved in the model. The visualization is then possible, if required, also without corresponding license.

The application FLAN provides functions for ascertaining the restriction outlines of altered components (adapter) in the areas of non-altered blank (addendum) for CATIA V5-6 and development of upper beveling parts with constants and with variable radius.

5.3 VWGRCLite Set of Special Applications

Individual approval by Volkswagen AG is required for use of the applications marked with **.

5.3.1 Netline V5

Netline V5 provides the CATIA users with a function using which netlines can be created in the in CATIA V5-6 CATDrawings as well as in the ground level and in any section views with the corresponding caption and with the adjustable netlines distance. The application netline provides functions for creating, modifying and deleting the netgrids. The net to be created is using the line type and line width, line distance, text size and text position as well as the scaling in a panel. The view level is determined automatically and the netgrid is created within the earlier indexed points as connection.

5.3.2 3DZP

3DZP is a software package to create captures in CATIA V5-6. The package contains the CAA FtaCaptureAid incl. the required settings (FTA: „Functional Tolerancing & Annotation“).

The creation of captures is particularly used at 3DZP for finishing 3D documents.

With a capture you can define views in CATIA V5-6. A capture does not only contain a perspective view of a part it also defines hide- and show elements, dimensioning, texts and tolerances in a preferred zoom factor.

To create captures there have to be views in your CATIA V5-6 data. In the process of 3DZP you have to create at least the "All_Initial_Capture" which can be done with the tool FtaCaptureAid.

FtaCaptureAid can be used in CATParts and CATProducts.

5.3.3 VWGVARTool

VWGVARTool (internal designation: Variants Tool) is a tool to generate and control variants in CATIA V5-6. A CATIA V5-6 tree structure with all relevant assemblies and parts is transferred by the VWGVARTool automatically into an Excel list. The imported structure result can be smaller and clearer, if using a 3D filter.

Then the user can define in Excel the desired variants. With VWGVARTool can be switched afterwards into a defined variant (CATIA V5-6 view control). The variants control can be transferred also into a pure V5-6-function. In this way it is also possible to use the variants control without VWGVARTool. This V5-6-function was made for group work or suppliers without variants tool.

5.3.4 VWGSpiegelteilMakro (VW Chassis)

VWGSpiegelteilMakro is a tool to create mirrored copies of CATIA parts and is included into the VW Chassis package.

Both a CATPart and a assembly can be mirrored as a single CATPart of CAD type "DMU".

The mirror plane is the XZ-Plane at the Origin of the Coordinates, so left/right side of a car for assemblies. According to the specifications of Volkswagen the part number will be increased automatically. The naming of the part can be adjusted by the user. As option the mirrored part will be saved by the application into the directory of the original part and will be checked by VALIDAT.

5.3.5 VWGPrintframes

VWGPrintframes is an application to Catia V5-6, that makes it possible to prepare drawings for user friendly printing.

One can define many print areas side by side or even nested in each other.

VWGPrintframes is integrated into the Drafting workbench of CATIA V5-6.

5.3.6 VWGBendTables

VWGBendTables is a CATIA V5-6 application to create standardized bend table.

For the documentation of the construction values of a tubing line there will be created a table in a drawing that called bend table. The content of this table will be generated from the 3D data of the tubing line.

The functions of VWGBendTables are integrated into the workspace of Tubing Design and Tubing Diagrams in CATIA V5-6.

5.3.7 VWGVZStempel

VWGVZStempel for CATIA V5-6 automates the creation of table that contains the parameters of a gear into drawings of CATIA V5-6.

The application supports the presentation of text and data that come from the calculation of gears. VWGVZStempel imports an ASCII file and creates a table from that data into a drawing. This table consists of elements from type line and text, that are bundled to one detail.

VWGVZStempel is integrated in the Drafting workbench of Catia V5-6.

5.3.8 VWNSectionMe

With VWNSectionMe it is possible to create cuts or cutting lines from 3D-Geometry. The Program one by one takes the cutting planes that were created by the user before and creates a cut from every CATPart und cutting part (cutting planes) that is included in the CATProduct.

The cuts or cutting lines will be stored in a freely nameable geometrical set in the cutting part as a cuttingtrack or cutting point.

5.3.9 VWNKonstruktionsassistent

The Tool VWNKonstruktionsassistent deals with the subject of creation and publication of RPS-Elements in the Reference Point System.

These functions are:

- Defining the axis system
- Appointing, processing, publishing, canceling of Hole- or RPS-Points
- Creating of RPS-hatching
- Publishing of geometry and coping it into OUT
- Inserting of the RPS-Table into a drawing

5.3.10 VWGSPi (SPICA)**

VWGSPi is a tool that simulates kinematic of solid or flexible parts in CATIA-Assemblies.

5.3.11 VWGKOLOS**

VWGKOLOS is a tool that creates pattern of holes in design surfaces.

5.3.12 VWGWRL**

VWGWRL is a tool that imports VRML into CATIA V5-6.

6 VALIDAT

Which uses do I have if I apply VALIDAT?

What is the difference between the version "VALIDAT Basis" and "VALIDAT Professional"?

What is the meaning of structure analysis with VALIDAT?

With VALIDAT, the quality of exchanged data is assessed as per the uniform criteria, because the checking program executes a checking of created CAD-data according to the VDA-suggestion 4955/4. Thus, the quality of CAD-elements and element connections is ascertained as per defined checking criteria. The tolerance values can be set and saved according to the checking requirements. The graphical representation of checking results enables a quick and target-oriented detection of various areas and elements.

6.1 Difference VALIDAT Basis / VALIDAT Professional

With the VALIDAT Software, a current criteria list is delivered. In this list, there is a comparison of repairing services between basic and professional expansion. Apart from that, it can also be ascertained from this list, whether specified criteria for VOLKSWAGEN are relevant or not.

In the consideration in case of repairing services, the difference is that one only in the version "VALIDAT Professional", otherwise the versions are identical. The following table shows which out of them are currently available.

Below is the overview of sorted criteria list with the differences between basis and professional with reference to the relevance for the VOLKSWAGEN criteria.

B	C	D	JW	JX	JY	JZ	KA	
VALIDAT V5 / Version 10.1.2			Aktive	KO	Warn	Info	Repair	
	ID	Beschreibung						
Co-G	O-CM-IC	Item data consistency incorrect	X		x		bas	
	O-CM-IP/CONNPROP	Old CONNECT properties	X		x		bas	
	O-CM-IP/EVB3DPROP	Non-standard model property (eVB-3D-Property)	X		x		bas	
	O-CM-OO	OutGen/IPP Status	X	x			bas	
	O-CM-OO/PUB	Feature and Parameter are published	X			x	bas	
	O-CM-PA/PROPRPR	Inconsistent Parameter and Properties (Repairable)	X		x	x	bas	
	O-CM-PN/NTOOL	Inconsistent NTool properties	X	x			bas	
	O-CM-PR	User defined properties	X	x	x		bas	
	O-CM-TP	TopoCheck	X	x	x		bas	
	O-CM-VE/SF_HIDE	Wrong Display of Solid and Surface (show instead of hide)	X		x		bas	
	O-CM-VE/SF_SHOW	Wrong Display of Solid and Surface (hide instead of show)	X		x		bas	
	O-CM-WS/VTALOCK	VTA elements unlocked	X	x			bas	
	O-CM-WS/TYPE	Wrong Type of Design	X	x		x	bas	
	O-GL-LY	Layer used	X			x	bas	
	O-CS-NS	No standard coordinate system	X	x	x		bas	
	O-CS-NV	Non-standard coordinate system visible	X	x	x	x	bas	
	D-OR	O-PR-VE/SHOW	Non-standard element visibility (only Show/No Show)	X	x		x	bas
		D-OR-LV	Locked views	X	x	x		bas
		D-OR-PF	Missing plot frame points (view size)	X	x		x	prof
		D-OR-SS	Non-standard scale	X	x			bas
D-OR-VP		Wrong view projection method	X	x		x	bas	
Set-	S-PR-AP	Non-standard accuracy parameters	X	x	x	x	bas	
	S-PR-MU	Non-standard magnitude unit	X	x			bas	
	S-PR-SM	Non-standard shading mode	X	x	x		bas	

The criteria list is always subject to further customizations – please check this in case of updates. The whole List could be found at VWGRCLite GUI at "Documentation- Applications- VWGValidat"- Validat Kriterien, or in Excel format in the installation path under
<VWGRCLITE_K_PATH>\catia\vwgrclite_10xxx\opt\oem\vw_group\R32\CAA\VWGValidatProfile\Help.

The VALIDAT basis and the professional version fulfil the checking requirements as per VOLKSWAGEN Norm VW 01059 part 6. VALIDAT professional fulfils the requirements as per SASIG/VDA certification. With VALIDAT professional, you can thus check more criteria. The checking scope exceeds the requirements of Volkswagen.

The above extractions from the criteria table are valid only for the VALIDAT Version 10.1.2. The allocation of criteria to the licenses basis and professional can be changed in the coming versions.

6.2 Benefit of VALIDAT-Professional license

Where does the VALIDAT-Professional License bring a benefit?

VALIDAT Professional currently offers one more repair service, the extended standard check window, the possibility of automated checks in batch mode and the Professional license is automatically released. Detailed information can be found in the following section as well as an extract of the VALIDAT criteria list under 6.1.

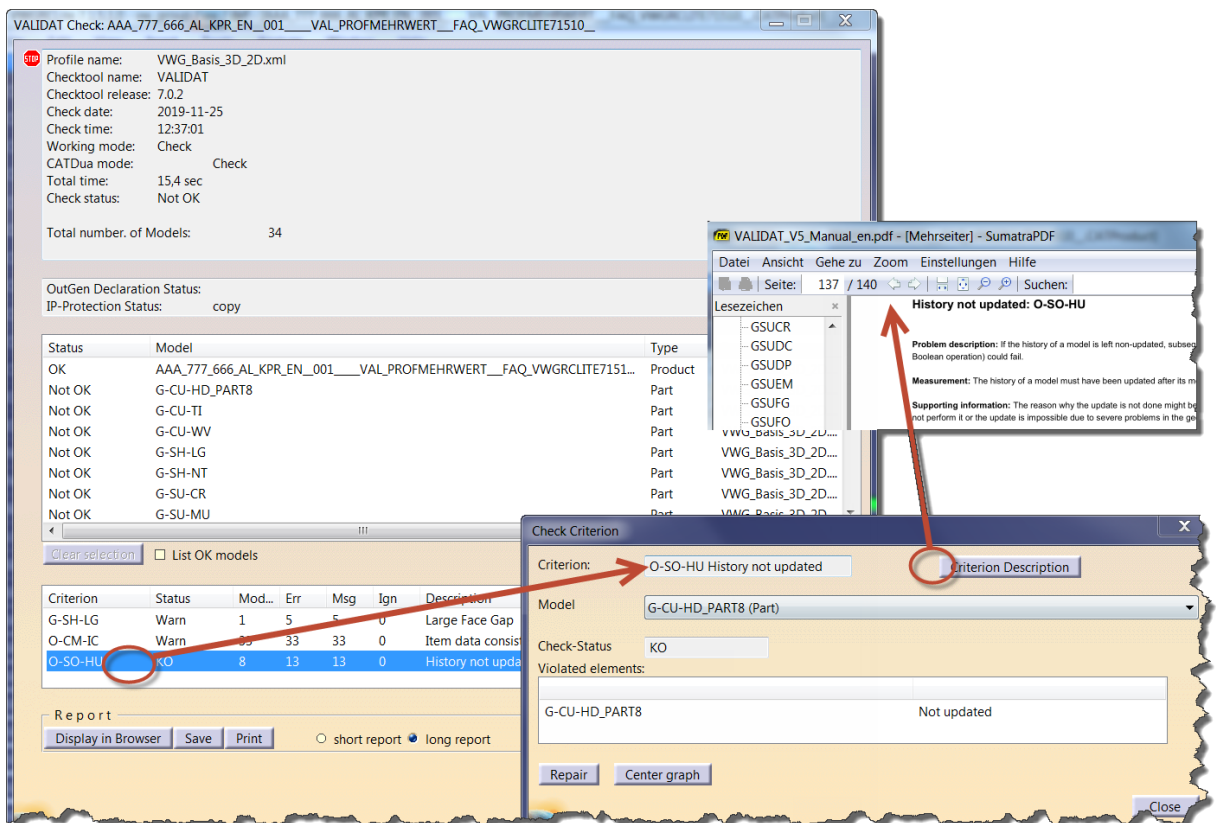
Each development partner must decide for themselves whether the Validat Professional functionality has an additional benefit for them.

6.2.1 Check Result - handling and information content of standard check window enlarged

The Check Protocol for the check result can optionally be displayed as soon as the check has been completed, but it can also be opened at any time using the protocol icon in the VALIDAT main menu.

Here, users can also further evaluate the check results and even provide approval if appropriate.

The handling and the information content of the standard check windows can be enlarged by connecting of the professional license under Tools/Options.



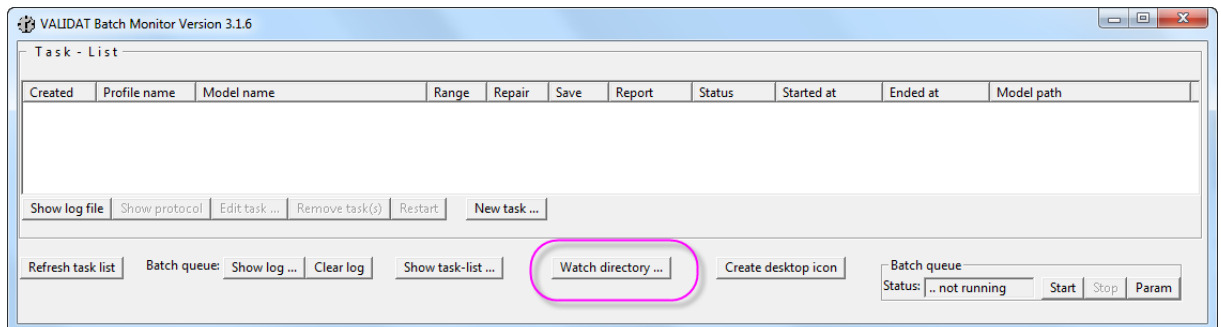
Please refer to Validat manual for more details.

6.2.2 Automated VALIDAT Check of CATIA Data

In batch mode, it is possible to activate an automatic time-defined check. The specific Directory is monitored for CATIA Data to be checked. Thereby for example your CATIA Data can be checked overnight.

For the automated VALIDAT Check of assemblies (ZSB, KPR) a PX1 license is also required because the root document must be checked. An automated check of CATParts is possible without a PX1 license.

Have a look to [VALIDAT structure analysis](#)



Detailed information about the automated directory monitoring could be read in the VALIDAT User manual.

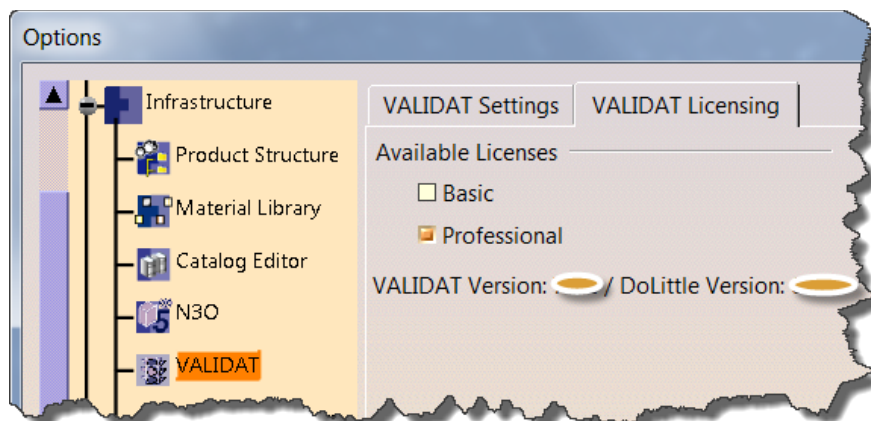
6.2.3 VALIDAT Professional License released automatically

Since VALIDAT 2.4.x Version the Professional license is automatically released after each use of a VALIDAT function.

With VALIDAT Basic the license is kept granted until VALIDAT Toolbar is closed.

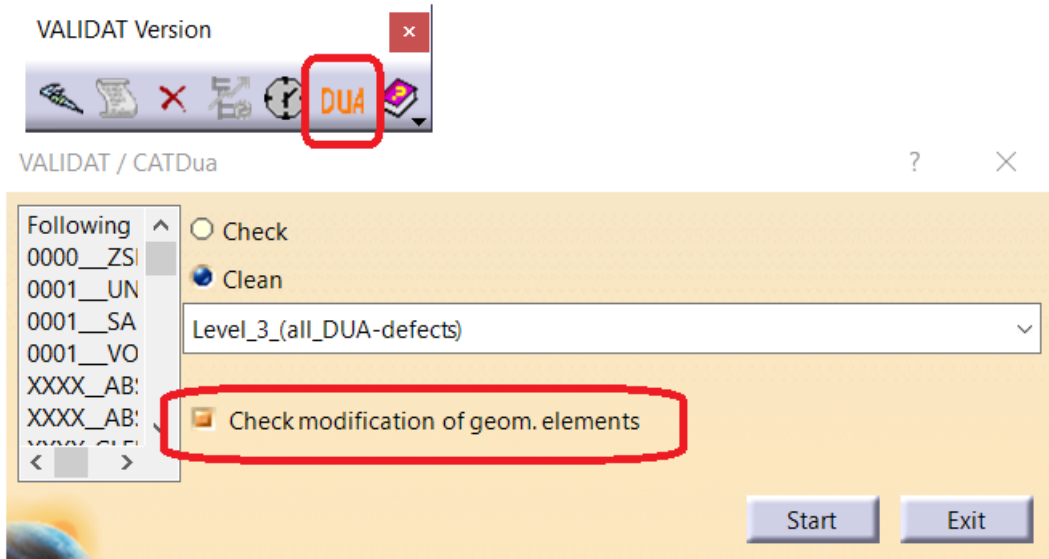
Notice - it is not necessary to finish the current CATIA Session; simply the VALIDAT-Toolbar needs to be closed. This could be done within the Pull-down Menu "View- Toolbars" by unmark "VALIDAT Version X.X.X", e.g.

It is also possible to enable the license by deselect "Basic" under „Tools- Options ...“ as shown below.



6.2.4 VALIDAT CATDua - extra Clean Option

Geometric changes after a VALDAT-CATDUA-Clean can be displayed with the VALIDAT Professional license. For this purpose, the switch "Check modification of gem. elements " must be active.



6.3 VALIDAT structure analysis

You can run the structure analysis and link checking of CATIA V5-6 data locally on your computer. In case of successful checking of the structure you are guaranteed that the CATIA V5-6 data is not rejected by HyperKVS due to this criterion.

A PX1/VX1 license is still needed for automated directory monitoring of assemblies (ZSB, KPR) with VALIDAT Batch (Watch directory) because the root document has to be checked. The automated directory monitoring is only available in the VALIDAT Professional Version.

For automated directory monitoring of CATParts with VALIDAT Batch, only a VALIDAT Professional license is required, no PX1.

7 Benefit of VX1 / PX1 license

Where does PX1/VX1 bring a benefit?

VOLKSWAGEN recommends the deployment of PX1 (plus VX1). Since the PX1 license is not free of charge, each development partner must decide for himself if the functionality acquisition has a benefit for him.

Note:

A VX1 license requires a PX1 license. A VX1 license without the PX1 license does not bring any functionality.

The PX1/ VX1 license is required for the following VWGRCLite Applications/Functions:

- NTool New From
- NTool Send To
- NTool Save Management
- KVS Plugin
- VALIDAT Basis
- VALIDAT Professional – Automated Check, see Automated VALIDAT Check of CATIA Data
- VWGVarTool - VarTool batch starts functions “NTool Convert To ...” and “NTool Save Management”
- LTA RPS Diagnostic tool - option “Attach actually loaded model to the report”

8 Release of operating system / CATIA V5-6 combinations

The software is only provided for MS Windows 10 64 bit.

Chapter 2 of VWGRCLite Installation Guide gives more details, for example which language package and security update are allowed.

VWGRCLite	Operating system	CATIA V5-6
10.2.7.2.1	64-bit Windows 11 Enterprise Edition, English (optional: German language package) Timely Updates: Current Branch for Business Currently Windows 11 Version 23H2 is released for the VWGRCLite	CATIA V5-6 R2022 SP03 HF038

There should be a bilateral agreement between the Volkswagen department and the development partner about the usage of a system environment.

Every usage of a non-Volkswagen released operating system and CATIA V5-6 combination is done on your own risk and will be not supported by Volkswagen in case of a problem.

9 License manager FlexNet

The VWGRCLite and the VWGRCLite Applications are licensed for FlexLM respectively FlexNet as license manager.

If you have licenses of the type “floating”, then a license server is required.

If you have licenses of the type “Nodelock” then a license server is not required.

The adequate license manager could be downloaded at the ServiceNet. You will find the actual required FlexNet software at the short link <https://vwgroup.t-systems.com/flexlm>. Furthermore, you will find documentation for implementing of FlexNet licenses (Type Floating and Nodelock!), as well as the topic of borrowing licenses.

10 VWGRCLite Web-Installer

The VWGRCLite Web-Installer is a software supporting you with the installation, setup and configuration of a current VWGRCLite environment on an end-user system. It offers a simple and uniform user interface to obtain and install VWGRCLite packages. In order to be able to use the VWGRCLite Web-Installer, you will need a user account for the VW portal of the T-Systems ServiceNet. In order to be able to run the application, you will need elevated user rights (former administrator privileges) on the target machine, where the VWGRCLite environment is supposed to be configured.

Functionality

The VWGRCLite Web-Installer will support you with obtaining VWGRCLite packages as well as with the configuration of a VWGRCLite environment. It will catch typical errors that may occur during installation or configuration of a VWGRCLite environment.

The VWGRCLite Web-Installer may also only be used to obtain the VWGRCLite packages which may then be integrated into existing rollout workflows.

You can find a quick start guide and a Known Problems document in a download box at the end of this page: [VWGRCLite Web-Installer](#).

11 Contacting the VWGRCLite Service – Service Desk

If you have questions concerning the VWGRCLite environment or the VWGRCLite Applications, please contact our Service Desk. The Service Desk can be accessed in the following ways:

- By telephone (Service Desk): +49 375 606199-19
- By e-mail (central mailbox): cax-consulting@t-systems.com

See also <https://wgroup.t-systems.com/cax-contact>

11.1 You direct an inquiry to VWGRCLite Service, by telephone or email

Please specify your complete contact data this makes the subsequent contacting easier.

Also, so that your query reaches the correct processor, please simultaneously specify what type of query you have. e.g.:

- Questions on the order process or order form
- Proposal for Applications or Services
- Problems/Questions on VWGRCLite Installation
- Questions on integration of VWGRCLite Applications
- Registration of an application problem (software error)
- Lodging a request (requirements to VWGRCLite or an VWGRCLite Application)

In case of problems with the VWGRCLite and/or the VWGRCLite Applications, please compile a traceable problem scenario based on a current VWGRCLite environment (VWGRCLite-Support Mail, screenshots, log files, configuration, working step till cancellation...) Note that the installation, configuration and use of the VWGRCLite must be in accordance with the documentation provided by Volkswagen.

Principle send the content of the VWGRCLite-Support Mail. See [VWGRCLite – Support Mail](#)

11.2 Reporting errors/problems related to VWGRCLite

Before reporting a problem, please use the [VWGRCLite Online Help](#) and have a look into the Known Problems list first (<https://vwgroup.t-systems.com/problems>).

Problem reports need a minimum amount of detailed data.

Please find a checklist and a document with further information on the page <https://vwgroup.t-systems.com/issues>.

For an issue or an error, please send us the following data:

- an understandable and comprehensible scenario of the issue or error
- the information according to the checklist
- the used license file

Hint:

The requested "Support Mail" could be generated within the VWGRCLite GUI at menu "Help".

Please refer to [VWGRCLite – Support Mail](#).

Attention:

For a thorough problem analysis possibly test data will be required.

Please do not share test data that are uncritical shippable via email and only after direct consultation with the VW Problem Management!

Reports with insufficient data cannot be processed!

11.3 Procedure for lodging a request

For your requirements for the VWGRCLite to be implemented correctly, VOLKSWAGEN needs a precise description of the desired functionality.

A specification document, which must be delivered completely, is provided on the page <https://vwgroup.t-systems.com/request>.

Please do not summarize a collection of enhancement requests. Every requirement is done separately. For each request there is one incident number and one associated request number at VW.

We cannot give a warranty on the implementation of your requirement. The evaluation of your request for further development of VWGRCLite/ VWGRCLite Applications is the responsibility of software manufacturer (VOLKSWAGEN).

12 GRC 10.2.7.x – What's new

Please find the actual NEWS for VOLKSWAGEN Engineering Partner at <https://vwgroup.t-systems.com/vwgrclite-news>. Below you will find some of this NEWS.

12.1 2024_002: Information about VWGRCLite 10.2.7.1.0 GoLive

29 April 2024

Volkswagen will switch to the **Group Reference CATIA (GRC) 10.2.7.1**. With the GRC 10.2.7.1, the **VWGRCLite 10.2.7.1.0** is also released for use by the engineering partner.

The new VWGRCLite 10 packages will be available in the ServiceNet from April 29, 2024, and can be downloaded.

The Volkswagen internal use of the GRC 10.2.7.1 begins on Monday, **May 13th, 2024**.

The **VWGRCLite 10.2.7.1.0** requires **CATIA V5-6R2022 SP03 HF38**.

The **productive use** of the VWGRCLite 10.2.7.1.0 at the partner companies must take place **at the same time** as the GRC goes live at Volkswagen (May 13th, 2024). There will be **no transition period** for the use of the VWGRCLite at the partner companies.

You will find detailed information about VWGRCLite 10.2.7.1.0 at T-Systems ServiceNet: <https://vwgroup.t-systems.com/vwgrclite>

Please also see the announcements on the NEWS page: <https://vwgroup.t-systems.com/vwgrclite-news>

If you have purchased VWGRCLite floating licenses, you need FlexNet 11.19.2.0.0. The FlexNet Software can be found at: <https://vwgroup.t-systems.com/flexlm>

The VX1 software (VWPDMGA) for the CATIA V5-6R2022 environment can be found at: <https://vwgroup.t-systems.com/vx1>

12.2 2024_005: New VWGRCLite Base Package 10.2.7.2.1 available

30 May 2024

The **new VWGRCLite Base Package 10.2.7.2.1** is now available in the ServiceNet, which fixes the incorrect behavior of the RPS application and the incorrect behavior while Installation via Command Line (batch mode).

RPS users should install the new version immediately!

Any RPS data that has been created, modified, or saved after opening them after May 13th, 2024, have to be checked thoroughly regarding coordinate tolerances and corrected accordingly.

This not only protects your data, but also the digital property of the Volkswagen Group.

12.3 2023_014: Important Information about VWGRCLite 10 Plus

Prerequisites

1 December 2023

Please note the pre-announcements of Volkswagen for the next VWGRCLite called 10 Plus release (planned for Q2 2024):

- 1) Starting with the VWGRCLite 10 Plus, VX1 and PX1 software and licenses are a prerequisite for a Validat test. This applies to Validat Professional and now also to Validat Basis.

Volkswagen needs to achieve CATIA/CAA data quality consistency within VW group and suppliers. Therefore it's mandatory to start the VALIDAT check with PX1 and VX1 license to collect all linked and optional documents correctly. The existence of these licenses is determined before each Validat check. If no PX1/VX1 license is assigned, the Validat check is aborted.

The VX1 software (WVPMGA) for the CATIA V5-6R2022 environment can be found at:

<https://wgroup.t-systems.com/vx1>

If you do not yet have a VX1 license for Validat, you can order the VX1 licenses at the VWGRCLite-Service using the VX1 order form. The form "VX1-Bestellformular EN V6.pdf" can be found on the page

<https://wgroup.t-systems.com/order-validat-base>.

For the PX1 license please contact your CATIA V5-6 Partner.

- 2) All VWGRCLite CAAs are freed from the classic Oracle JAVA (JRE etc.) and converted to openJDK where necessary.

13 Known Problems

13.1 Known Problems - VWGRCLite

Please note the Known Problems at <https://vwgroup.t-systems.com/problems>. This page contains information about problems/workarounds, which become known with latest VWGRCLite.

13.2 Known Problems - Web-Installer

The Document "VWGRCLite Web-Installer - Known Problems" at <https://vwgroup.t-systems.com/webinstaller> contains any error that may occur during the execution of the VWGRCLite Web-Installer. If a workaround exists, it is described in this document.

13.3 File %TEMP%\inst_grx.lock

During an (un-)installation errors can occur which leave a file named ".inst_grx.lock" under %TEMP%. This file then blocks any further (un-)installation procedures. Deleting this file can help then.

13.4 Installation on existing VWGRCLite installation

On the initial installation of the Base Packages, neither the VWGRCLite rootdir must exist, nor the VWGRCLite environment variables. Uninstallation with VWGRCLite Installer GUI or VWGRCLite Installer command line must be set. Therefore prior to installing a new VWGRCLite release, the previous VWGRCLite version must be uninstalled entirely.

The uninstall process is described in detail in "VWGRCLite Installation Guide", which could be found on the page "[VWGRCLite Information](#)".

14 VWGRCLite

The VWGRCLite includes the released CATIA partner environments of participating Volkswagen brands and departments.

Additionally a set of licensed Volkswagen applications are integrated into the VWGRCLite.

For access to all information and downloads of the current released VWGRCLite you have to do the registration as described in chapter 2.2.2 [ServiceNet account - Registration and "Forgot your password?"](#).

After Login you have access to this VWGRCLite page [VWGRCLite](#):

The screenshot shows the top navigation bar of the T-Systems website with the logo and the slogan "Let's power higher performance". Below the navigation bar is a menu icon and the text "Menu". The main content area features a large heading "VWGRCLite 10.2.7.2.1" followed by a paragraph of text explaining the update. Below this is another paragraph detailing the reasons for the update. A section titled "Important:" provides critical information about the current release and the end of support for the previous version. At the bottom of the page, there are two expandable sections: "Scope" and "Licensing".

DE | EN Annette Lüer

T Systems Let's power higher performance

☰ Menu

VWGRCLite 10.2.7.2.1

The following provided information is agreed with the responsible persons of the Volkswagen AG.

Due to the increasingly complex dependencies in the Volkswagen CATIA V5-6 partner environments, Volkswagen has decided to merge many of the previously necessary installation components into a unified routine (the VWGRCLite). Special installation packages will be delivered for the VWGRCLite.

Important: Volkswagen internally uses the Group Reference CATIA (GRC) 10.2.7.2 For development partners currently **VWGRCLite 10.2.7.2.1** is released. The support for VWGRCLite 10.2.7.2.0 ends with the provision of the new VWGRCLite version 10.2.7.2.1. Please always note the information on the **NEWS** Page.

VWGRCLite

∨ **Scope**

∧ **Licensing**

14.1 VWGRCLite – requirements and prerequisites

Before you install any software, it is essential to read the information and documentation about VWGRCLite installation/administration on the page "[VWGRCLite Information](#)".

14.2 VWGRCLite – Tips and Tricks

14.2.1 VWGRCLite – Support Mail

If you want to report a problem regarding the VWGRCLite to the CAx-Service (support interface regarding the VWGRCLite), please use the function “Support Mail” in the menu “Help”.

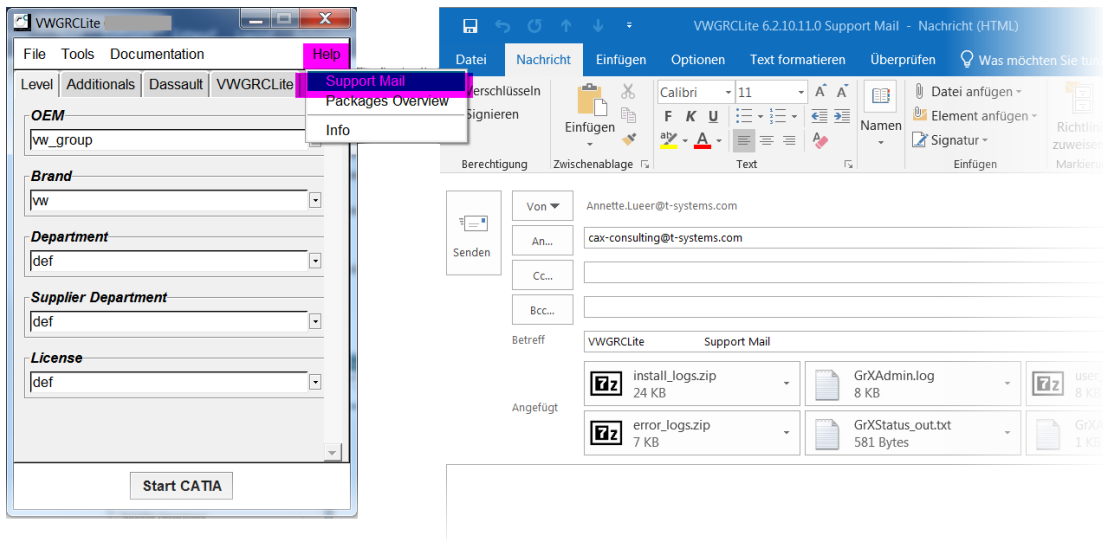
Using this function will collect all relevant information about your system environment. Following this an Outlook mail with the recipient cax-consulting@t-systems.com and the collected information will be displayed.

In case of problems regarding VWGRCLite applications (e.g., Validat, NTool, etc.) you should extend this mail by a reproducible problem scenario description (e.g., steps taken until the problem occurs, output of diagnosis functions of the application, screenshots, etc.).

Important hint: If you want to report a problem, please regard the Volkswagen „checklist“ at

<https://vwgroup.t-systems.com/issues>.

Caution: It is recommended to let your administrator, or your CAD support, check those problems first, before reporting them to the CAx-Service.



14.2.2 VWGRCLite – Support Mail without Outlook installation

The automatic support mail will be created only if Microsoft Outlook is installed and configured as the default mailing application. If this is not the case, you will be asked to save the needed VWGRCLite log and system files (e.g., to C:\temp). Afterwards you can attach them to your e-mail.