

VOLKSWAGEN

AKTIENGESELLSCHAFT

Volkswagen Group Reference CATIA Lite

Activating FlexNet licenses for VWGRCLite

Short description for Windows 10

EN

Responsible: *Carsten Carulli, K-FIMB/3*

Author: *Sabine Itani*

Status: *Released*

Document version: *3.0.1*

Date: *February 12, 2020*

Document version history:

Version	Status	Date	Comment	Edited by
1.0.0	Draft	Aug. 9, 2013	Document created	Andreas Klee (T-Systems)
1.0.0	Released	Apr. 5, 2013		C. Carulli
2.0.0	In progress	Sep. 14, 2015	Update for FlexNet 11.12	S. Itani
2.0.0	Released	Sep. 16, 2015	Check and release	C. Carulli
3.0.0	In progress	Sep. 20, 2018	Complete update for FlexNet 11.15.1.0	S. Itani
3.0.0	In progress	Feb. 22, 2019	Formal corrections	S. Itani
3.0.0	Released	Feb. 22, 2019	Check and release	C. Carulli
3.0.1	In progress	Feb. 12, 2020	Formal corrections	S. Itani
3.0.1	Released	Feb. 12, 2020	Check and release	C. Carulli

Other applicable documents:

Version	Status	Designation
11.15.1		Flexera: FlexNet Publisher R1 2018 License Administration Guide March 2018
		VWGRCLite Installation Guide in the respective latest version

© Copyright

Volkswagen AG, Wolfsburg K-FIMB/3

All rights reserved

These documents are intended only for use in conjunction with VWGRCLite.

It is not permitted to reprint these documents or extracts thereof without the consent of Volkswagen AG.

Table of contents

Table of contents	3
List of figures	4
1 General.....	6
1.1 Target group and content of the short description	7
2 Floating License for a FlexNet Server	8
2.1 Downloading and unzipping the FlexNet software/documentation	8
2.2 Copying the VW application license file.....	10
2.3 Adjusting the license file.....	10
2.3.1 SERVER line.....	11
2.3.1.1 Hostname	11
2.3.1.2 Host ID	12
2.3.1.3 Port (optional).....	13
2.3.2 DAEMON "vwagkdoe" line (optional)	14
2.3.2.1 Port (optional).....	14
2.4 Setting up a FlexNet server service with LMTOOLS	16
2.4.1 Selecting the using service	16
2.4.2 Configuring the FlexNet service	17
2.4.3 Starting the FlexNet service	18
2.4.3.1 Note for license file changes	19
2.4.4 Checking the server status	20
2.4.4.1 FlexNet error codes.....	22
3 VWGRCLite Setting for License Query (Client)	24
3.1 Syntax for the VWGRCLite license query definition	24
3.2 Query during the VWGRCLite base package installation	26
3.3 Setting the VWGRCLite variable "VWGRCLITE_LICENSE_PATH"	28
4 Nodelocked License	29
5 Note about the License File of a Server Triade	30

List of figures

Figure 1-1 Example of a nodelocked license	6
Figure 1-2 Example of a floating license for a server.....	6
Figure 1-3 Example of a floating license for a three-server redundancy configuration	7
Figure 2-1 Example of the downloaded FlexNet Version 11.15 software and standard documentation	8
Figure 2-2 Content of the directories after unzipping the .zip files	9
Figure 2-3 Example of a "license.dat" file in the FlexNet installation directory.....	10
Figure 2-4 SERVER line in a floating license file (single server)	11
Figure 2-5 "Hostname" parameter to be adjusted in the SERVER line.....	11
Figure 2-6 Example of a hostname definition in the SERVER line	11
Figure 2-7 Example of a hostname definition (FQDN) in the SERVER line	11
Figure 2-8 Example of a hostname definition (IP address) in the SERVER line	12
Figure 2-9 "Host IS" SERVER line parameter (must not be adapted!).....	12
Figure 2-10 Example of a Host ID in the SERVER line.....	12
Figure 2-11 Optional "Port" parameter in the SERVER line.....	13
Figure 2-12 Example of a fixed port definition in the SERVER line	13
Figure 2-13 Vendor daemon line	14
Figure 2-14 "Port" parameter to be adjusted in the SERVER line	15
Figure 2-15 Example of a fixed port definition in the vendor daemon line	15
Figure 2-16 Directory with lmtools.exe	16
Figure 2-17 LMTOOLS "Service/License File": enables "Configuration using Services"	16
Figure 2-18 LMTOOLS default setting for the log file	17
Figure 2-19 LMTOOLS example of "Config Services"	17
Figure 2-20 LMTOOLS example of "Start Server" and status of the local "VWCAX" service (starting)	18
Figure 2-21 Example of local "VWCAX" service with "Started" status	18
Figure 2-22 LMTOOLS example of "Stop Server" and status of the local "VWCAX" service	19
Figure 2-23 LMTOOLS check – sample scenario: "Perform Status Enquiry"	20
Figure 2-24 Sample scenario "Perform Status Enquiry": status information on server and vendor daemon.....	20
Figure 2-25 LMTOOLS sample scenario: "View Log" button on the "Config Services" tab	21
Figure 2-26 LMTOOLS sample scenario: panel output of "View Log"	21
Figure 2-27 LMTOOLS sample scenario: "Close Log" button on the "Config Services" tab	21
Figure 2-28 Example of a FlexNet server status error message with "error code" and note indicating the cause	22

Figure 2-29 Example of a VWGRCLite error message with FlexNet "error code" and note indicating the cause	23
Figure 3-1 VWGRCLite base package installation: query panel for the license	26
Figure 3-2 Example of a faulty license definition: input field is shaded in red	27
Figure 3-3 Example of setting a license definition with variable VWGRCLITE_LICENSE_PATH	28
Figure 4-1 Example of a definition of a nodelocked license file during the base package installation	29
Figure 5-1 Example of parameters to be adjusted in a triple server license file	30
Figure 5-2 Sample adjustments for a triple server license.dat	30

1 General

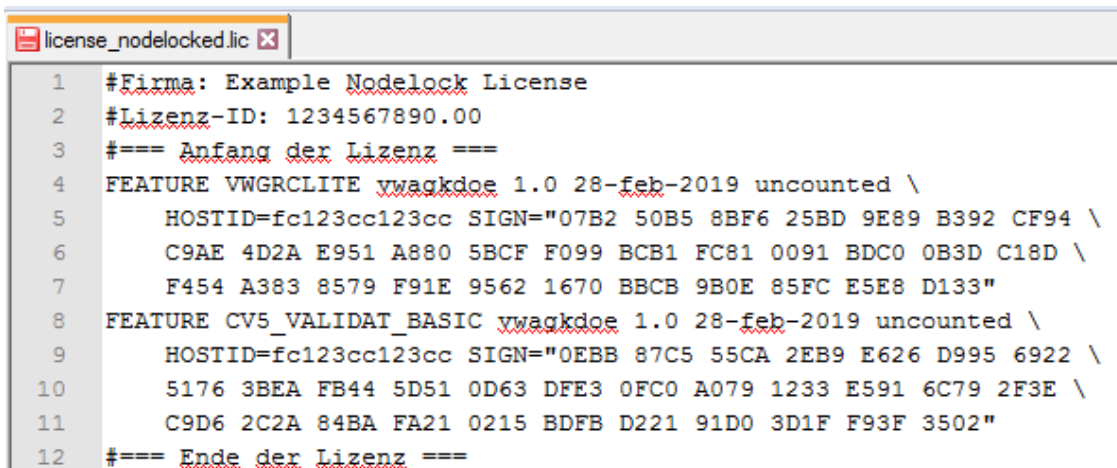
For VWGRCLite and for most of its CAA supplied with VWGRCLite, Volkswagen AG uses Flexera FlexNet Publisher together with its own vendor daemon "vwagkdoe". The FlexNet software released for VWGRCLite is provided by Volkswagen AG in the ServiceNet: <https://vwgroup.t-systems.com/flexlm>
Please note the additional information on this ServiceNet page.

The following license models are currently available for VWGRCLite/VW CAA:

- Nodelocked licenses
- Floating licenses for a server
- Floating licenses for a FlexNet three-server redundancy configuration

Further information can be found on the [order pages of ServiceNet](#).

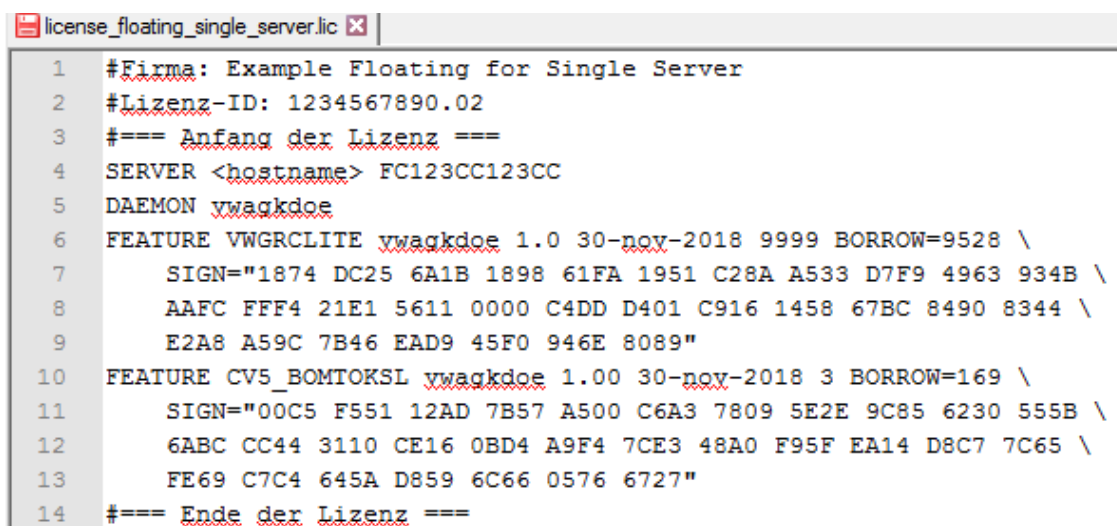
Below is an example image of the license file for the respective licensing model.



```

1  #Firma: Example Nodelock License
2  #Lizenz-ID: 1234567890.00
3  #=== Anfang der Lizenz ===
4  FEATURE VWGRCLITE vwagkdoe 1.0 28-feb-2019 uncounted \
5      HOSTID=fc123cc123cc SIGN="07B2 50B5 8BF6 25BD 9E89 B392 CF94 \
6      C9AE 4D2A E951 A880 5BCF F099 BCB1 FC81 0091 BDC0 0B3D C18D \
7      F454 A383 8579 F91E 9562 1670 BBCB 9B0E 85FC E5E8 D133"
8  FEATURE CV5_VALIDAT_BASIC vwagkdoe 1.0 28-feb-2019 uncounted \
9      HOSTID=fc123cc123cc SIGN="0EBB 87C5 55CA 2EB9 E626 D995 6922 \
10     5176 3BEA FB44 5D51 0D63 DFE3 0FC0 A079 1233 E591 6C79 2F3E \
11     C9D6 2C2A 84BA FA21 0215 BDFB D221 91D0 3D1F F93F 3502"
12 #=== Ende der Lizenz ===
  
```

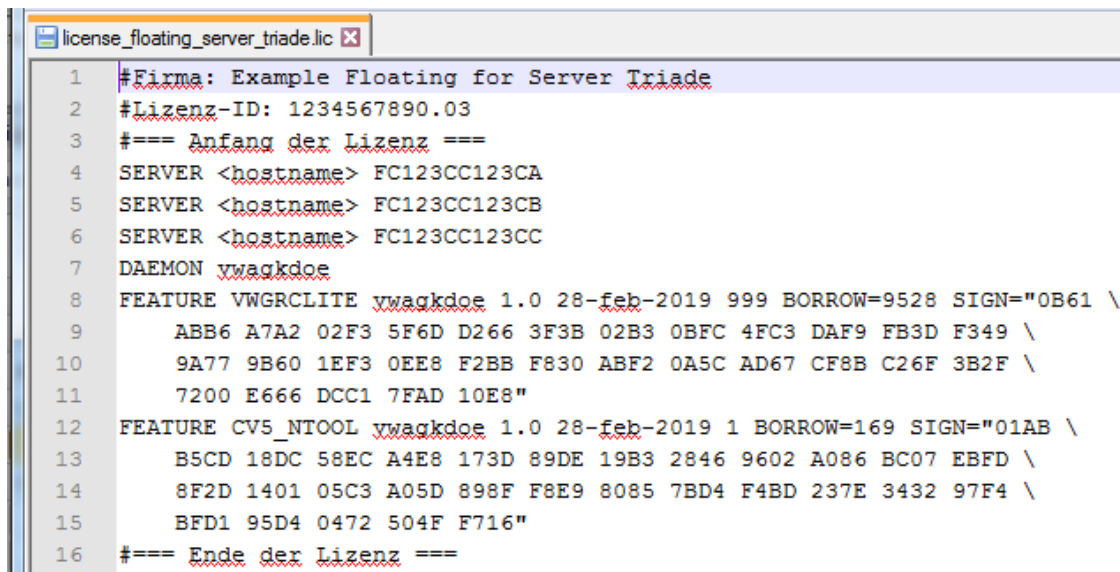
Figure 1-1 Example of a nodelocked license



```

1  #Firma: Example Floating for Single Server
2  #Lizenz-ID: 1234567890.02
3  #=== Anfang der Lizenz ===
4  SERVER <hostname> FC123CC123CC
5  DAEMON vwagkdoe
6  FEATURE VWGRCLITE vwagkdoe 1.0 30-nov-2018 9999 BORROW=9528 \
7      SIGN="1874 DC25 6A1B 1898 61FA 1951 C28A A533 D7F9 4963 934B \
8      AAFC FFF4 21E1 5611 0000 C4DD D401 C916 1458 67BC 8490 8344 \
9      E2A8 A59C 7B46 EAD9 45F0 946E 8089"
10 FEATURE CV5_BOMTOKSL vwagkdoe 1.00 30-nov-2018 3 BORROW=169 \
11     SIGN="00C5 F551 12AD 7B57 A500 C6A3 7809 5E2E 9C85 6230 555B \
12     6ABC CC44 3110 CE16 0BD4 A9F4 7CE3 48A0 F95F EA14 D8C7 7C65 \
13     FE69 C7C4 645A D859 6C66 0576 6727"
14 #=== Ende der Lizenz ===
  
```

Figure 1-2 Example of a floating license for a server



```

1  #Firma: Example Floating for Server Triade
2  #Lizenz-ID: 1234567890.03
3  #=== Anfang der Lizenz ===
4  SERVER <hostname> FC123CC123CA
5  SERVER <hostname> FC123CC123CB
6  SERVER <hostname> FC123CC123CC
7  DAEMON vwagkdoe
8  FEATURE VWGRCLITE vwagkdoe 1.0 28-feb-2019 999 BORROW=9528 SIGN="0B61 \
9      ABB6 A7A2 02F3 5F6D D266 3F3B 02B3 0BFC 4FC3 DAF9 FB3D F349 \
10     9A77 9B60 1EF3 0EE8 F2BB F830 ABF2 0A5C AD67 CF8B C26F 3B2F \
11     7200 E666 DCC1 7FAD 10E8"
12  FEATURE CV5_NTOOL vwagkdoe 1.0 28-feb-2019 1 BORROW=169 SIGN="01AB \
13     B5CD 18DC 58EC A4E8 173D 89DE 19B3 2846 9602 A086 BC07 EBFD \
14     8F2D 1401 05C3 A05D 898F F8E9 8085 7BD4 F4BD 237E 3432 97F4 \
15     BFD1 95D4 0472 504F F716"
16  #=== Ende der Lizenz ===

```

Figure 1-3 Example of a floating license for a three-server redundancy configuration

1.1 Target group and content of the short description

The document is intended for VWGRCLite administrators. In addition, knowledge of system and network administration is required, as well as English language skills for IT use. General knowledge of license managers (e.g., FlexNet), client/server, meaning of ports is assumed and is not or only superficially dealt with in this document.

The short description covers a simplified option for the integration of FlexNet licenses, which are required for running VWGRCLite. The example explains what to do if you have a floating license (Chapters [2](#) and [3](#)) or [nodelocked license](#) for a Windows 10 Professional or Enterprise machine.

The integration of floating licenses for a three-server redundancy configuration is not included in the scope of this document. Administrators of three-server redundancy configurations generally have advanced FlexNet administration knowledge. Only brief notes on the configuration of three-server redundancy configuration licenses is provided here.

The short description does not cover all integration or configuration options. If you require more information, please use the original documentation of the FlexNet 11.15.1.0 manufacturer Flexera. For example, if you

- want to use another operating system released by Volkswagen as FlexNet server (such as AIX, Linux Red Hat)
- want to use a three-server redundancy configuration
- need to manage multiple license files
- require further configuration options (such as option files)

Your own installation may differ from this example.
Administration rights and knowledge are required.

2 Floating License for a FlexNet Server

If you have purchased a VW CAA FlexNet floating license for a Windows 10 Professional/Enterprise machine, the following steps must be taken:

- [Obtain and install FlexNet license manager software](#)
- [Install](#) and [prepare the floating license](#)
- [Set up the FlexNet server as a service](#)
- [Configure VWGRCLite for license query \(client\)](#)

You can find more details in the following chapters.

2.1 Downloading and unzipping the FlexNet software/documentation

The FlexNet software and documentation currently released by Volkswagen can be found in the T-Systems ServiceNet under the following link <https://vwgroup.t-systems.com/flexlm>. The operating system releases for FlexNet servers specified on this ServiceNet page must be observed.

The FlexNet software released by Volkswagen contains the vendor daemon "vwagkdoe."

The use of non-approved operating systems and/or FlexNet software other than that currently released in the ServiceNet is at your own risk.

Save the software and documentation in a newly created directory. In this example it is "C:\FlexNet."

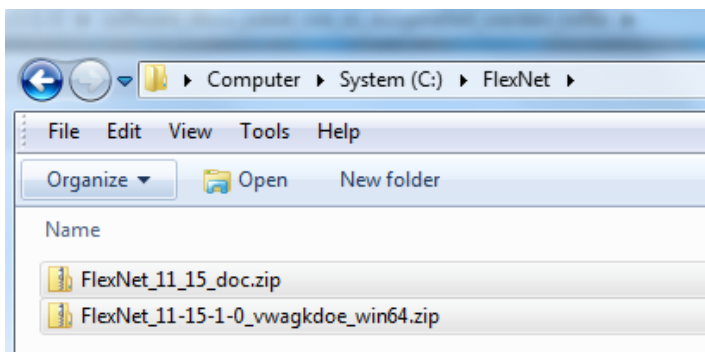


Figure 2-1 Example of the downloaded FlexNet Version 11.15 software and standard documentation

Then unzip the .zip files. After unzipping, the following structure is created:

C:\FlexNet\win64 → the FlexNet software for Windows (64-bit)

C:\FlexNet\doc → This contains the original documentation of the FlexNet manufacturer Flexera
"FlexNet_11_15_1_LicAdmin.pdf" (English) and the README (contains quick guides for Unix operating systems in German/English, among other things).

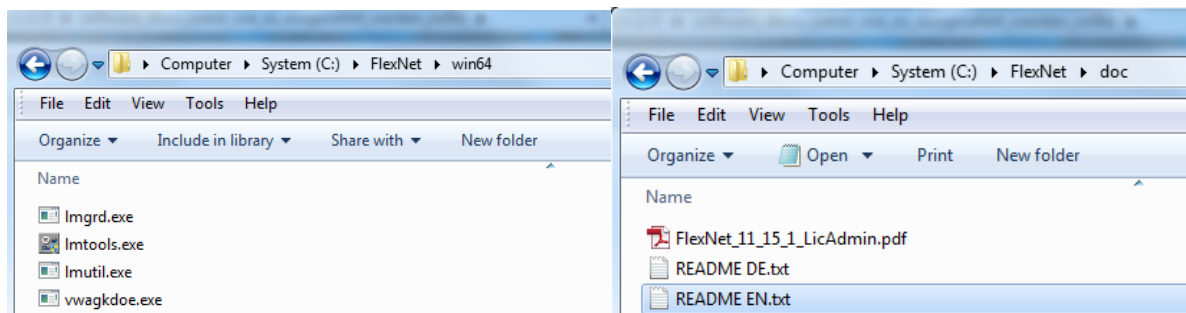


Figure 2-2 Content of the directories after unzipping the .zip files

2.2 Copying the VW application license file

Copy your license file for the VW additional application(s) (e.g., for Validat V5 Basis, NTool, etc.) into the FlexNet installation directory. In the following example descriptions, the license file is called "license.dat."

Note: Usually you will receive a license file with a different name by e-mail (e.g., in the format: !Q6UJ9A002C8Dlicense.dat). You can rename the license file "license.dat" (or "license.lic").

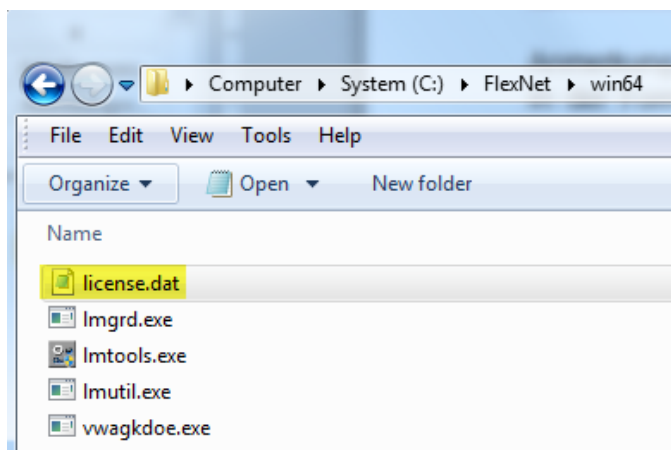


Figure 2-3 Example of a "license.dat" file in the FlexNet installation directory

2.3 Adjusting the license file

Please note that FlexNet license files are structured according to a specific format. If necessary, changes must be made carefully and only in the designated/permitted places. All other changes to a license file can cause it to become invalid.

We recommend that you make a backup copy of the license file before each change.

Edit the license file with a text editor (not a word processor such as MS Word).

2.3.1 SERVER line

The line in the license file beginning with "SERVER" must be adjusted. Syntax: SERVER Hostname Host ID [Port]

```

1 #Firma: Example
2 #Lizenz-ID: 1234567890.02
3 #=== Anfang der Lizenz ===
4 SERVER hostname hostid [port]
5 DAEMON vwagkdoe [[PORT=]port]
6 FEATURE VWGRCLITE vwagkdoe 1.0 30-nov-2018 9999 BORROW=9528 \
7     SIGN="1874 DC25 6A1B 1898 61FA 1951 C28A A533 D7F9 4963 93"
```

Figure 2-4 SERVER line in a floating license file (single server)

For more details, see FlexNet_11_15_1_LicAdmin.pdf, Chapter "SERVER Lines."

2.3.1.1 Hostname

Instead of "Hostname", the hostname or IP address of the FlexNet server must be entered.

Note: The computer specified for "Hostname" must also have the "[Host ID](#)" specified in the license file.

```

1 #Firma: Example
2 #Lizenz-ID: 1234567890.02
3 #=== Anfang der Lizenz ===
4 SERVER hostname hostid [port]
5 DAEMON vwagkdoe [[PORT=]port]
6 FEATURE VWGRCLITE vwagkdoe 1.0 30-nov-2018 9999 BORROW=9528 \
7     SIGN="1874 DC25 6A1B 1898 61FA 1951 C28A A533 D7F9 4963 934B '
8     AAFC FFF4 21E1 5611 0000 C4DD D401 C916 1458 67BC 8490 8344 \
```

Figure 2-5 "Hostname" parameter to be adjusted in the SERVER line

```

1 #Firma: XYZ
2 #Lizenz-ID: 5555555555.55
3 #=== Anfang der Lizenz ===
4 SERVER host1234 ECF4BB1185FE
5 DAEMON vwagkdoe
6 FEATURE CV5_DOLITTLE vwagkdoe 1.0 30-nov-2018 3 BORROW=169 SIGN
7     0B15 1C0E 087C 6CCC 01D3 C3C8 F3F8 A11C D438 7773 C911 90B4
```

Figure 2-6 Example of a hostname definition in the SERVER line

```

1 #Firma: XYZ
2 #Lizenz-ID: 5555555555.55
3 #=== Anfang der Lizenz ===
4 SERVER host1234.pcxvz.com ECF4BB1185FE
5 DAEMON vwagkdoe
6 FEATURE CV5_DOLITTLE vwagkdoe 1.0 30-nov-2018 3 BORROW=169 SI(
7     0B15 1C0E 087C 6CCC 01D3 C3C8 F3F8 A11C D438 7773 C911 90B4
```

Figure 2-7 Example of a hostname definition (FQDN) in the SERVER line

```

1 #Firma: XYZ
2 #Lizenz-ID: 5555555555.55
3 #=== Anfang der Lizenz ===
4 SERVER 192.0.2.42 ECF4BB1185FE
5 DAEMON vwagkdoe
6 FEATURE CV5_DOLITTLE vwagkdoe 1.0 30-nov-2018 3 BORROW=169 SIGN='
7      0B15 1C0F 087C 6CCC 01D3 C3C8 F3E8 AAAC D438 7773 C9AA 90B4 '

```

Figure 2-8 Example of a hostname definition (IP address) in the SERVER line

2.3.1.2 Host ID

When ordering the license, you specified the "Host-ID" of your FlexNet server. The "Host-ID" already exists in the SERVER line of the delivered license file and must not be adapted by you. Any change at this point will invalidate the license.

Note: The computer specified for "[Hostname](#)" must also have the "Host ID"!

```

1 #Firma: Example
2 #Lizenz-ID: 1234567890.02
3 #=== Anfang der Lizenz ===
4 SERVER hostname hostid [port]
5 DAEMON vwagkdoe [[PORT=]port]
6 FEATURE VWGRCLITE vwagkdoe 1.0 30-nov-2018 9999 BORROW=9528 \
7      SIGN="1874 DC25 6A1B 1898 61FA 1951 C28A A533 D7F9 4963 934B \

```

Figure 2-9 "Host ID" SERVER line parameter (must not be adapted!)

```

1 #Firma: XYZ
2 #Lizenz-ID: 5555555555.55
3 #=== Anfang der Lizenz ===
4 SERVER host1234 ECF4BB1185FE
5 DAEMON vwagkdoe
6 FEATURE CV5_DOLITTLE vwagkdoe 1.0 30-nov-2018 3 BORROW=169 SI
7      0B15 1C0F 087C 6CCC 01D3 C3C8 F3E8 AAAC D438 7773 C9AA 90

```

Figure 2-10 Example of a Host ID in the SERVER line

2.3.1.3 Port (optional)

A port is used for the communication clients (application)/servers (license manager, here: lmgrd). If no port is specified here in the license file, FlexNet uses a port from the default range (27000-27009).

Defining a fixed port is optional.

However, there are many constellations that necessitate a fixed port definition (e.g., for additional FlexNet servers in the network, for a FlexNet three-server redundancy configuration, or if a firewall monitors the network).

The use of fixed ports is recommended by the FlexNet manufacturer.

To define a fixed port, you can also use an unused port from the FlexNet default range (27000-27009).

For the sake of simplicity, the examples in this document use port numbers from the FlexNet default range.

If you do not want to use ports from the FlexNet default range for security reasons (DoS attacks), you can also use other free and valid ports.

A valid number is an unused port number in the range from 1 to 65535 (for Unix operating systems such as AIX, port > 1024 is a further restriction, as <1024 are privileged port numbers).

If you specify a port number greater than 65535, the client cannot connect to the license server manager (here: lmgrd).

When using port numbers, you must always make sure that they are not already used elsewhere in your system/network or blocked (firewall).

We recommend that you select the port together with the network/firewall administrator. A general statement about usable ports cannot be made here.

```

1  #Firma: Example
2  #Lizenz-ID: 1234567890.02
3  #=== Anfang der Lizenz ===
4  SERVER hostname hostid [port]
5  DAEMON vwagkdoe [[PORT=]port]
6  FEATURE VWGRCLITE vwagkdoe 1.0 30-nov-2018 9999 BORROW=9528 \
7  SIGN="1874 DC25 6A1B 1898 61FA 1951 C28A A533 D7F9 4963 93

```

Figure 2-11 Optional "Port" parameter in the SERVER line

```

1  #Firma: XYZ
2  #Lizenz-ID: 5555555555.55
3  #=== Anfang der Lizenz ===
4  SERVER host1234 ECF4BB1185FE 27000
5  DAEMON vwagkdoe
6  FEATURE CV5_DOLITTLE vwagkdoe 1.0 30-nov-2018 3 BORROW=169 SIGN="01
7  0B15 1C0F 087C 6CCC 01D3 C3C8 F3E8 AAAC D438 7773 C9AA 90B4 \

```

Figure 2-12 Example of a fixed port definition in the SERVER line

2.3.2 DAEMON "vwagkdoe" line (optional)

The line in the license file beginning with "DAEMON vwagkdoe" can be adjusted. This document only looks at port adjustment.

Syntax: DAEMON vwagkdoe [[PORT=]port]

```

1  #Firma: Example
2  #Lizenz-ID: 1234567890.02
3  #=== Anfang der Lizenz ===
4  SERVER hostname hostid [port]
5  DAEMON vwagkdoe [[PORT=]port]
6  FEATURE VWGRCLITE vwagkdoe 1.0 30-nov-2018 9999 BORROW=9528 \
7  SIGN="1874 DC25 6A1B 1898 61FA 1951 C28A A533 D7F9 4963 934B \

```

Figure 2-13 Vendor daemon line

See FlexNet_11_15_1_LicAdmin.pdf, Chapter "VENDOR Lines" for more details on possible adjustments.

2.3.2.1 Port (optional)

A port is used for communication between the license manager and vendor daemon. If no port is specified here in the license file (or a port is defined with 0), the operating system determines an ephemeral port at runtime.

Defining a fixed port is optional.

If a firewall is in use, a fixed port definition may be mandatory.

When using port numbers, you must always make sure that they are not already used elsewhere in your system or blocked (firewall).

The port number for the vendor daemon "vwagkdoe" must also not be identical with another port definition in the license file (e.g., with the port in the SERVER line).

To define a fixed port, you can also use an unused port from the FlexNet default range (27000-27009).

For the sake of simplicity, the examples in this document use port numbers from the FlexNet default range.

We recommend that you select the port together with the network/firewall administrator. A general statement about usable ports cannot be made here.

Note: When starting a vendor daemon with a fixed port definition, delays may occur.

```

1 #Firma: Example
2 #Lizenz-ID: 1234567890.02
3 #=== Anfang der Lizenz ===
4 SERVER hostname hostid [port]
5 DAEMON vwagkdoe [[PORT=]port]
6 FEATURE VWGRCLITE vwagkdoe 1.0 30-nov-2018 9999 BORROW=952
7     SIGN="1874 DC25 6A1B 1898 61FA 1951 C28A A533 D7F9 496

```

Figure 2-14 "Port" parameter to be adjusted in the SERVER line

```

1 #Firma: XYZ
2 #Lizenz-ID: 5555555555.55
3 #=== Anfang der Lizenz ===
4 SERVER host1234 ECF4BB1185FE 27000
5 DAEMON vwagkdoe Port=27005
6 FEATURE CV5_DOLITTLE vwagkdoe 1.0 30-nov-2018 3 BORROW=169 SIGN="
7     0B15 1C0F 087C 6CCC 01D3 C3C8 F3E8 AAAC D438 7773 C9AA 90B4 \

```

Figure 2-15 Example of a fixed port definition in the vendor daemon line

2.4 Setting up a FlexNet server service with LMTOOLS

First start "lmtools.exe" by double-clicking on the file.

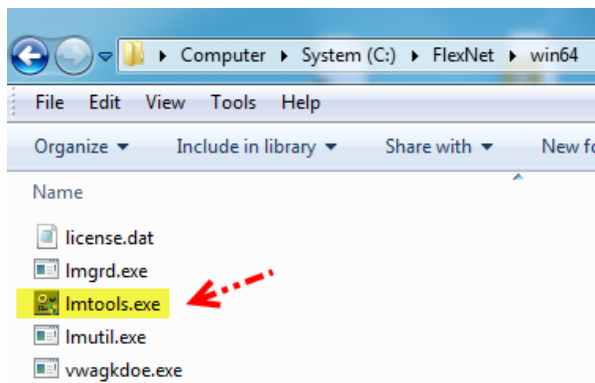


Figure 2-16 Directory with lmtools.exe

For more information see FlexNet_11_15_1_LicAdmin.pdf Chapter "Manually Starting the License Server Using the lmtools Utility."

2.4.1 Selecting the using service

After starting the LMTOOLS program, go to the "Service/License File" tab and enable "Configuration using Services."

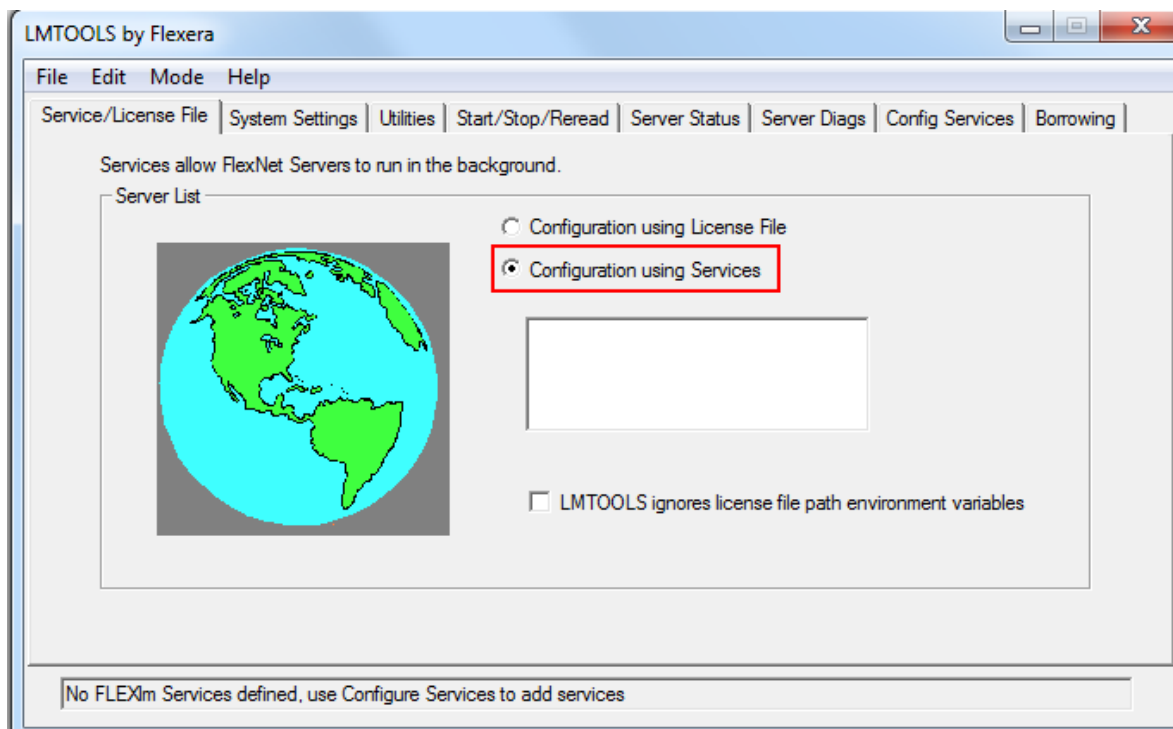


Figure 2-17 LMTOOLS "Service/License File": enables "Configuration using Services"

2.4.2 Configuring the FlexNet service

Switch to the "Config Services" tab in LMTOOLS.

Name the service (e.g., VWCAX). Enter the path to lmgrd.exe, to the license file, and to the log file. The respective path length may not exceed 255 characters.

Important: To avoid access problems for the service, the log file should be stored in a subdirectory of "ProgramData." In this example the default offered by LMTOOLS was taken over:

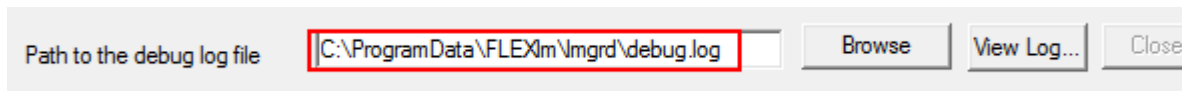


Figure 2-18 LMTOOLS default setting for the log file

Enable "Use Service" and "Start Server at Power up." This creates a service called "VWCAX" in Windows, which is automatically started when the computer is booted.

Note: The default behavior is a delayed start of the service.

The "Save Service" button creates the service with these settings, but does not enable it immediately.

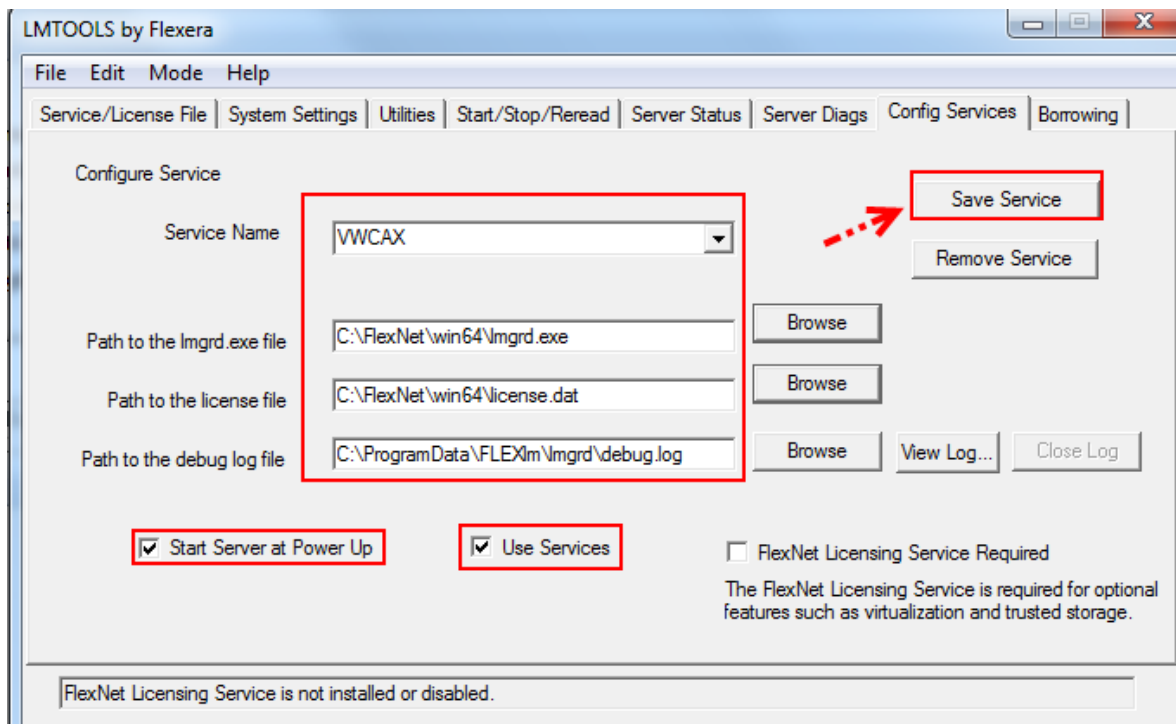


Figure 2-19 LMTOOLS example of "Config Services"

2.4.3 Starting the FlexNet service

Switch to the "Start/Stop/Reread" tab.

Use the "Start Server" button to start the selected service (here "VWCAX"). The message "Server Start Successful" appears immediately in the status bar. This must be checked on the system side, since the default of FlexNet when setting up the service is a "delayed start."

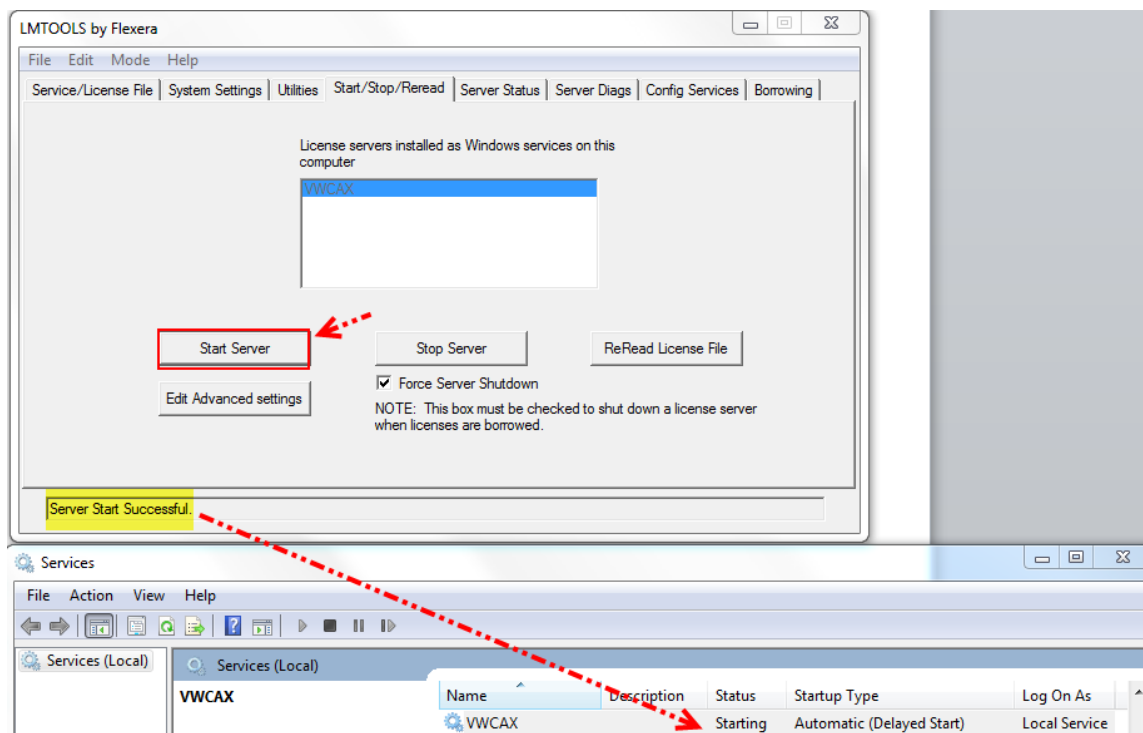


Figure 2-20 LMTOOLS example of "Start Server" and status of the local "VWCAX" service (starting)

The FlexNet server is only really running when the status of the local service is "Started."

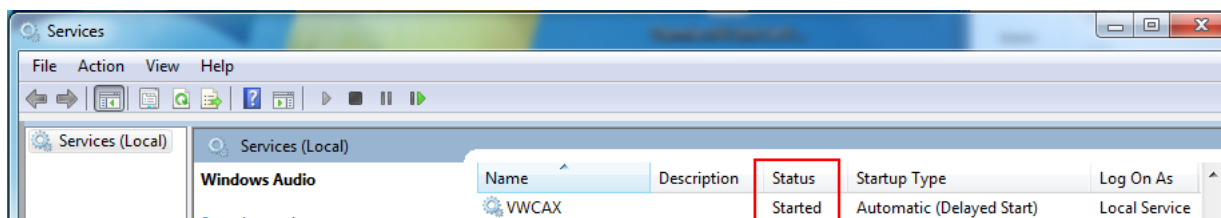


Figure 2-21 Example of local "VWCAX" service with "Started" status

2.4.3.1 Note for license file changes

Later changes to the license file only become active after the service has been stopped and restarted.

Switch to the "Start/Stop/Reread" tab.

Important: Since VWGRCLite licenses are delivered with the borrow option, the switch "Force Server Shutdown" must be activated.

The "Stop Server" button stops the FlexNet server. Unlike when starting, the service is stopped without much delay.

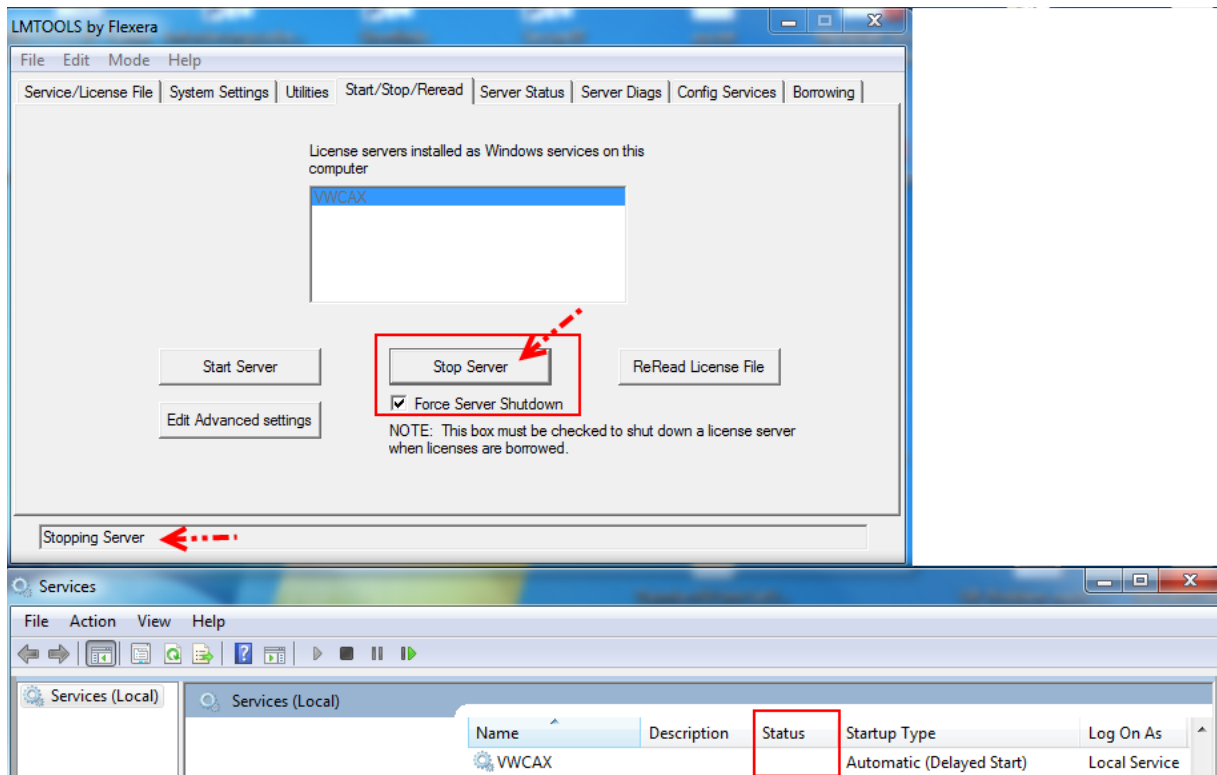


Figure 2-22 LMTOOLS example of "Stop Server" and status of the local "VWCAX" service

After stopping the service, it can be restarted. At [startup](#), the license file is imported, i.e., the changes become active.

2.4.4 Checking the server status

After the FlexNet server has been started, its status can be checked. To do this, go to the "Server Status" tab and press the "Perform Status Enquiry" button.

The status output contains information about the FlexNet server (e.g., lmgrd process, FlexNet version, port, and license file) and also information about the vendor daemon "vwagkdoe" (e.g., version, use of the individual license features).

Note: The server information was masked in the screenshot.

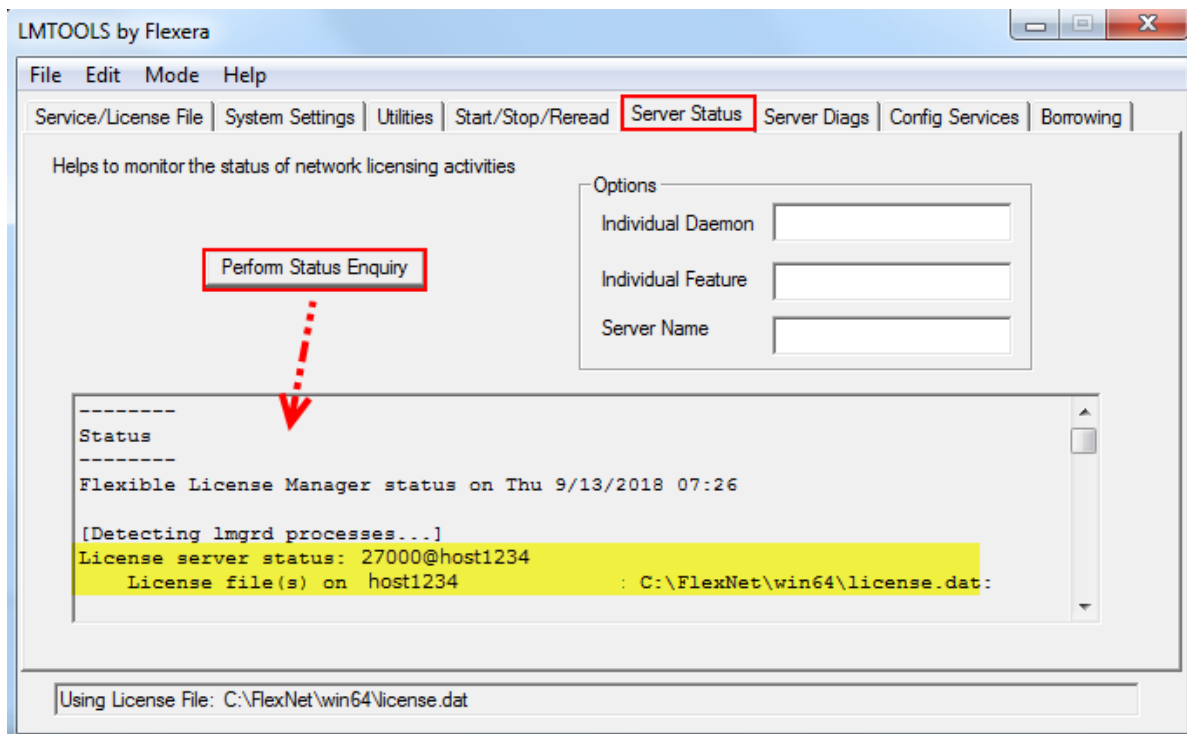


Figure 2-23 LMTOOLS check – sample scenario: "Perform Status Enquiry"

Review the status output. The information there must match the configuration made (e.g., ports, license file). The status of the server and the vendor daemon must be "UP" and without further error messages (see [FlexNet error code](#)).

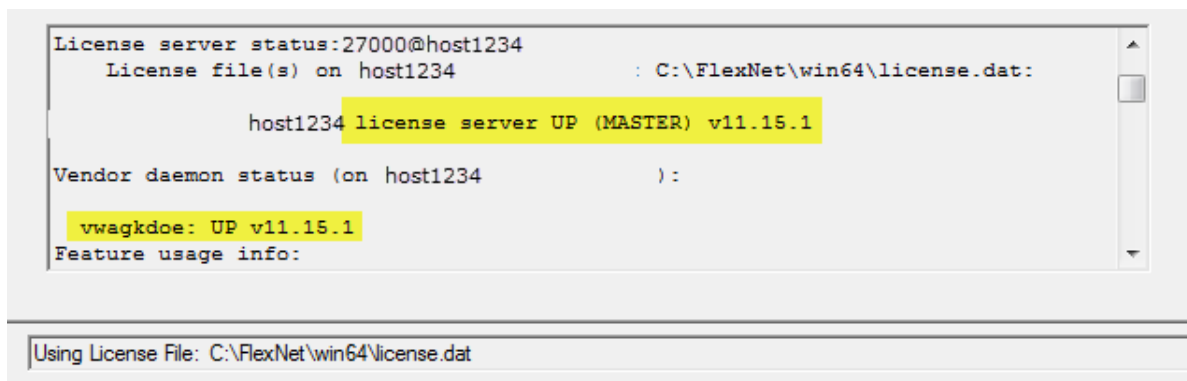


Figure 2-24 Sample scenario "Perform Status Enquiry": status information on server and vendor daemon

Even more comprehensive information about the FlexNet server can be obtained from the FlexNet log file. To do this, go to the "Config Services" tab and press the "View Log" button. A panel will open with a snapshot of the FlexNet log file (called "debug.log" in this example).

The information provided in the log file must match the configuration made (e.g., ports, license file). The status of the server and the vendor daemon must be "UP" and without further error messages (see [FlexNet error code](#)).

The license features listed must match the license file. The currently available licenses and their usage status can also be checked here.

Press the "Close Log" button to close the panel.

Note: The server information was masked in the screenshot.

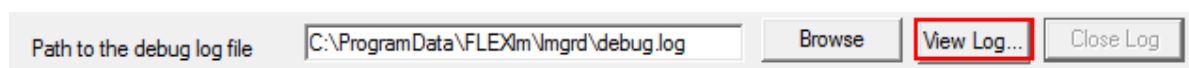


Figure 2-25 LMTOOLS sample scenario: "View Log" button on the "Config Services" tab

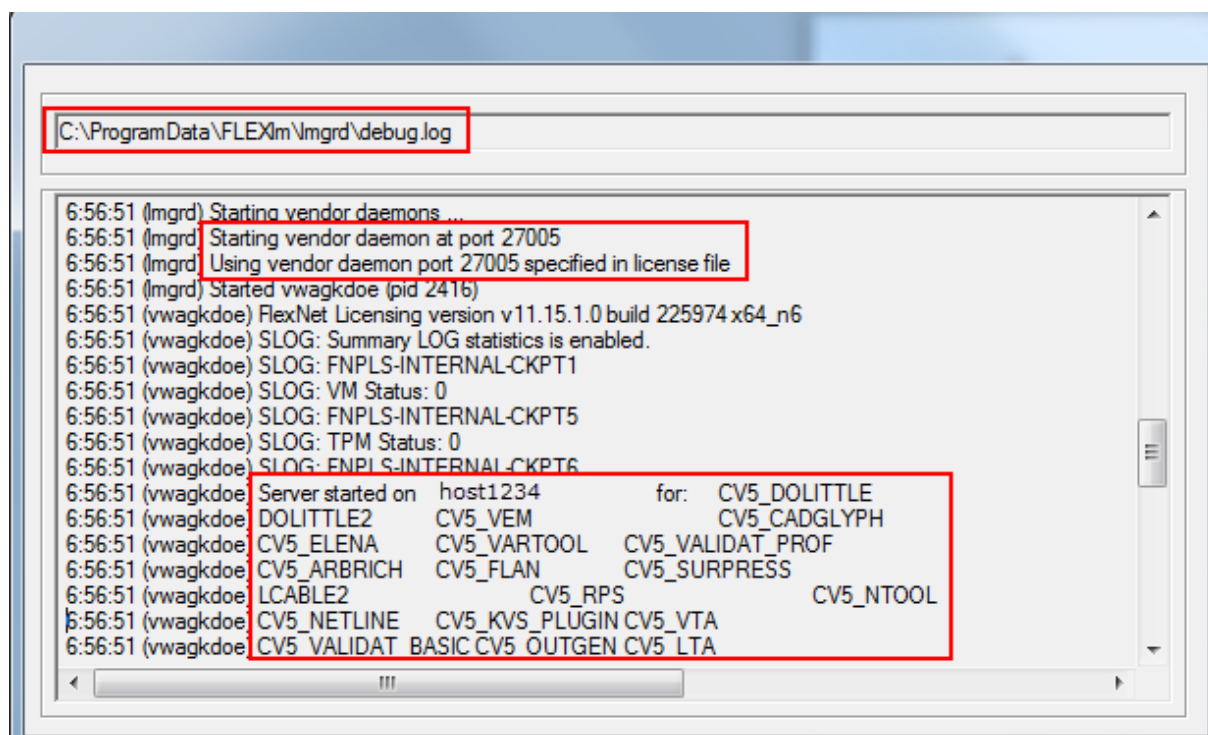


Figure 2-26 LMTOOLS sample scenario: panel output of "View Log"

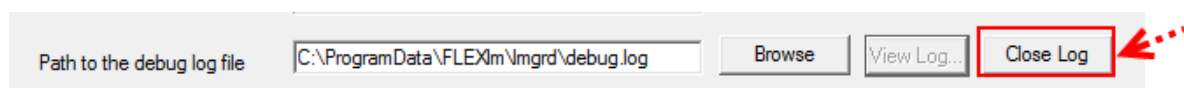


Figure 2-27 LMTOOLS sample scenario: "Close Log" button on the "Config Services" tab

2.4.4.1 FlexNet error codes

In the event of problems with the FlexNet Server, check the content of the "Status Enquiry" or the FlexNet log file for FlexNet error codes. FlexNet provides root cause information on the "error code," which you must check. Details can be found in the original documentation of the FlexNet manufacturer

FlexNet_11_15_1_LicAdmin.pdf, Chapter "Error Codes."

Please see below a FlexNet server status output example with "error code" and a note indicating the cause:

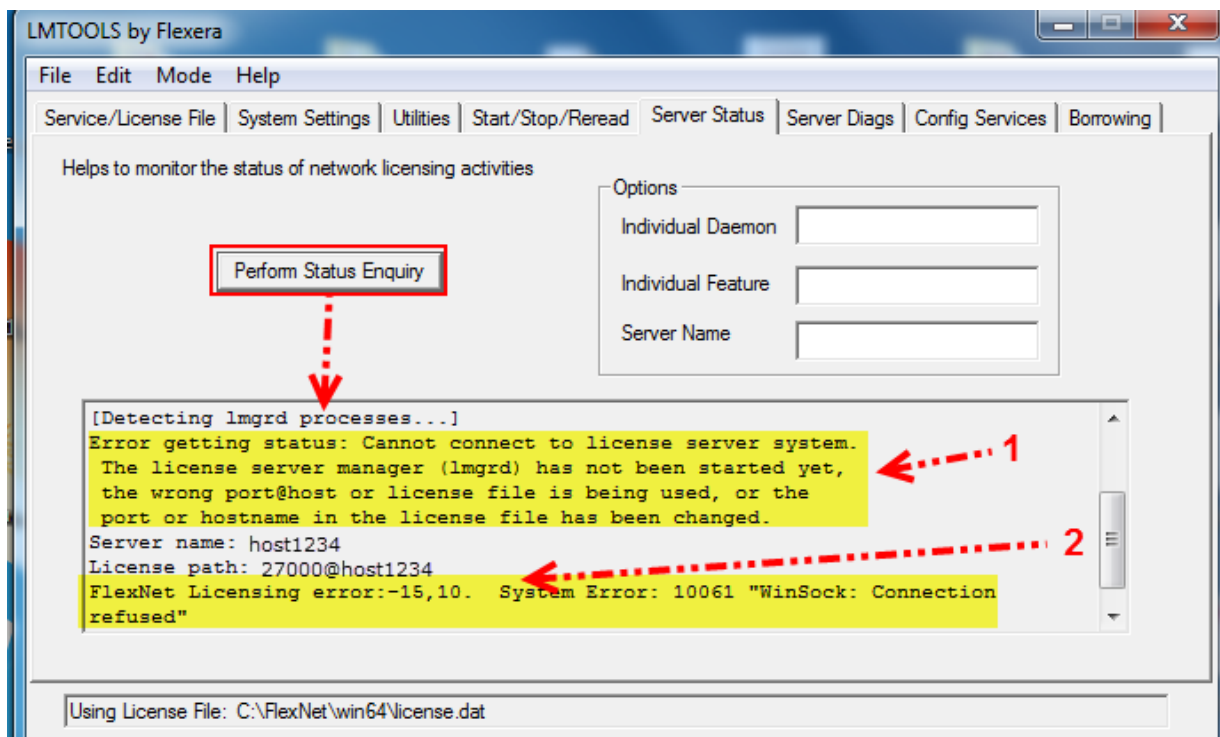


Figure 2-28 Example of a FlexNet server status error message with "error code" and note indicating the cause

Explanation of the image:

- 1) Information on the cause of the error, which you need to review.
- 2) FlexNet "error code" (here: -15). The "error codes" are described in the original documentation of the FlexNet manufacturer.

Note on messages from the client/application

If there is a problem with the VWGRCLite/CAA licenses on the client side while using VWGRCLite (e.g., the FlexNet server is not running, cannot be reached), VWGRCLite displays an information panel for the user. A FlexNet error code may also be specified here, which you must check.

An illustrative example of this:

When trying to start the VWGRCLite GUI (here for version 7.1.5.1.0) the following panel appears:

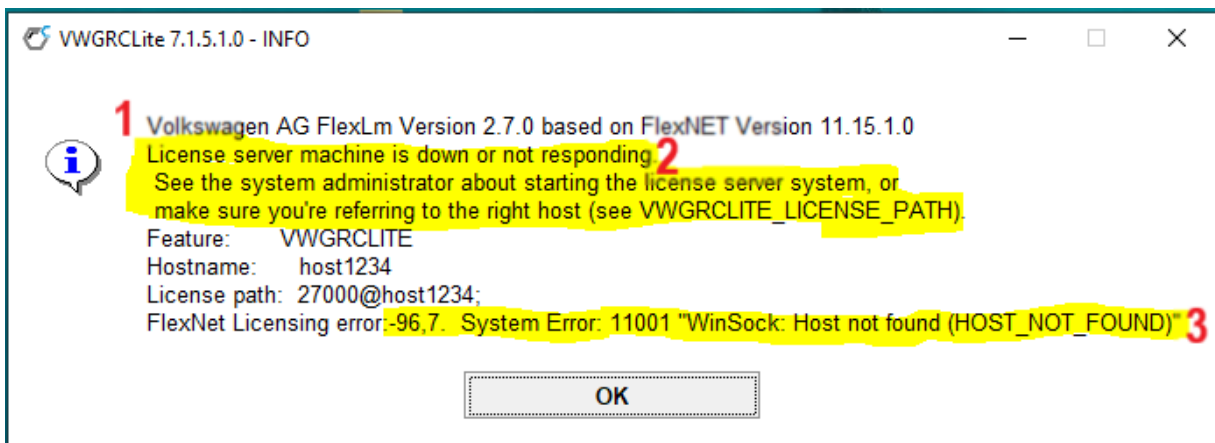


Figure 2-29 Example of a VWGRCLite error message with FlexNet "error code" and note indicating the cause

Explanation of the image:

- 1) Some details about the license module in the VWGRCLite software. The information about the FlexNet version for the license module (here 11.15.1.0) may differ in certain constellations from the used FlexNet server. Such a difference is not an error as long as the Volkswagen releases for FlexNet and for the VWGRCLite have been observed.
- 2) Information on the cause of the error, which you need to review.
- 3) FlexNet "error code" (here: -96). The "error codes" are described in the original documentation of the FlexNet manufacturer.

3 VWGRCLite Setting for License Query (Client)

There are two ways to configure the license query definition for VWGRCLite:

- 1) during the VWGRCLite base package installation
- 2) by setting the VWGRCLite system variable "VWGRCLITE_LICENSE_PATH"

The same syntax is to be used in both cases, because even with 1) the result is a "VWGRCLITE_LICENSE_PATH" variable that has been set accordingly.

Further details about the VWGRCLite installation can be found in the VWGRCLite Installation Guide and are not part of this document.

3.1 Syntax for the VWGRCLite license query definition

For a nodelocked license, specify:

Syntax: [path plus license file]

Example

C:\License\license.dat

For a FlexNet server without fixed port specification:

Syntax: @[Server]

With [Server] the respective [hostname definition](#) from the server line of the license file must be used.

Example

@ host1234

For a FlexNet server with fixed port specification:

Syntax: [Port]@[Server]

With [Port] the [port definition](#) and with [Server] the respective [hostname definition](#) from the server line of the license file must be used.

Example

27000@host1234

For a FlexNet three-server redundancy configuration, the server details are separated by a comma [,]

Syntax: [port]@[TriadServer1],[port]@[TriadServer2],[port]@[TriadServer3]

With [Port] the [port definition](#) and with [Server] the respective [hostname definition](#) from the relevant server line of the license file must be used.

Example:

27008@FC123CC123CA,27008@FC123CC123CB,27008@FC123CC123CC

Combinations of license models

Under Windows, the separator for combinations with different [license models](#) (nodelocked, floating (single server), and three-server redundancy configuration) is the semi-colon [;]. Within a three-server redundancy configuration, the comma [,] is used as a separator.

Example combination 1:

of individual FlexNet license servers (single server) and nodelocked license:

27000@host1234;C:\License\license.dat

Example combination 2:

a three-server redundancy configuration, a single server and a nodelocked license:

27008@FC123CC123CA,27008@FC123CC123CB,27008@FC123CC123CC;27000@host1234;C:\License\license.dat

3.2 Query during the VWGRCLite base package installation

During the VWGRCLite base package installation, the information about the VWGRCLite license is queried and checked.

If you have floating licenses, make sure that the FlexNet server has started successfully with the licenses before the VWGRCLite installation (see [Chapter 2](#)). If you have nodelocked licenses, they must be present on the VWGRCLite computer (see [Chapter 4](#)).

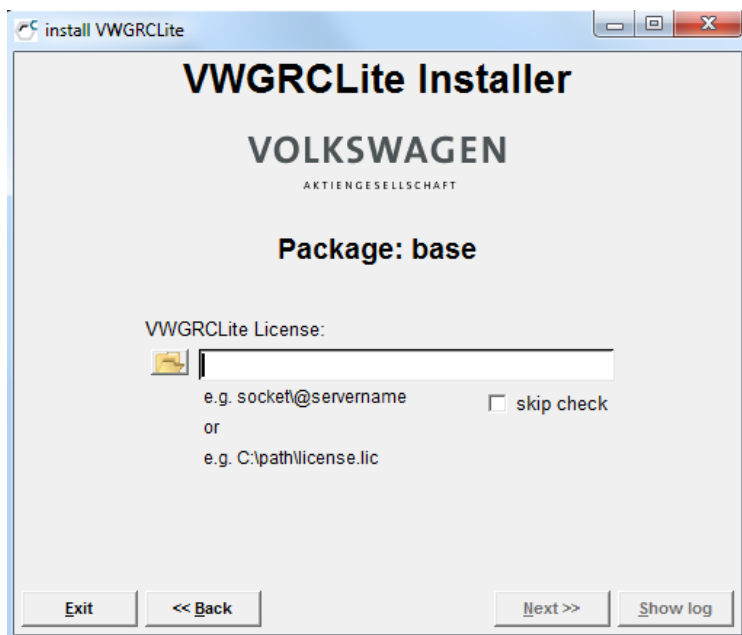


Figure 3-1 VWGRCLite base package installation: query panel for the license

If you want to specify the license later (e.g., because the FlexNet server is not yet active or the license file does not yet exist), you can skip the license query in the installer panel by setting the ☒ **skip check** option.

In this case the input field can remain empty, and the license has to be defined later by [setting the VWGRCLite system variable "VWGRCLITE_LICENSE_PATH."](#)

For your existing license (nodelocked, floating) and its configuration, the correct syntax must be used. Information on this can be found in [Chapter 3.1](#).

After your input the VWGRCLite Installer will check if a license is actively available there. If this is not the case, the input is highlighted in red and is not used for the installation. The VWGRCLite Installer does not provide any further information about the cause of the error. This must be determined and corrected by you (e.g., disk error or syntax error, FlexNet server is not running).

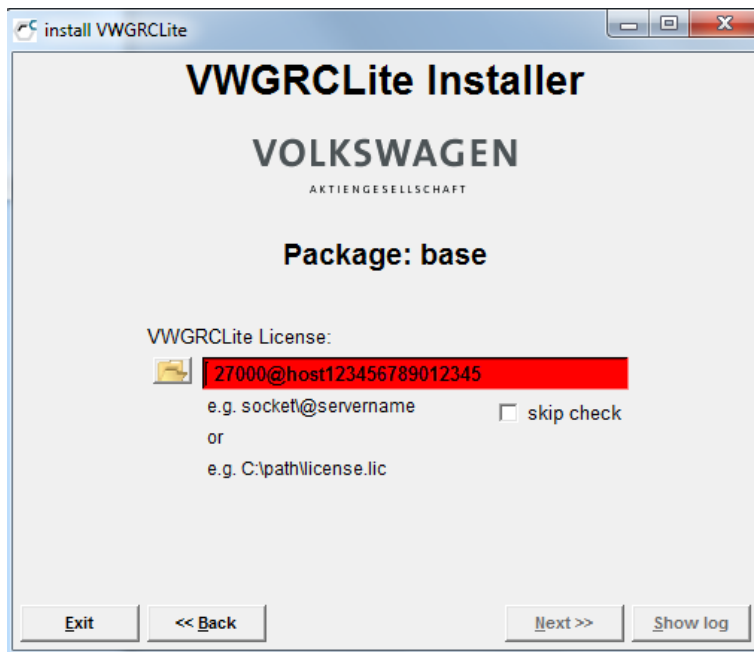


Figure 3-2 Example of a faulty license definition: input field is shaded in red

3.3 Setting the VWGRCLite variable "VWGRCLITE_LICENSE_PATH"

If the definition for the license query was not made with the VWGRCLite base package installation or if there were subsequent changes to the license configuration (e.g., license switch to another FlexNet server), the variable VWGRCLITE_LICENSE_PATH can be set or changed manually on the VWGRCLite computer.

For your existing license (nodelocked, floating) and its configuration, the correct syntax must be used. Information on this can be found in [Chapter 3.1](#).

Example Windows 10 computer:

Control panel

→System

→→ Advanced system settings

→→→ Environment Variables

→→→→set VWGRCLITE_LICENSE_PATH manually at system variables

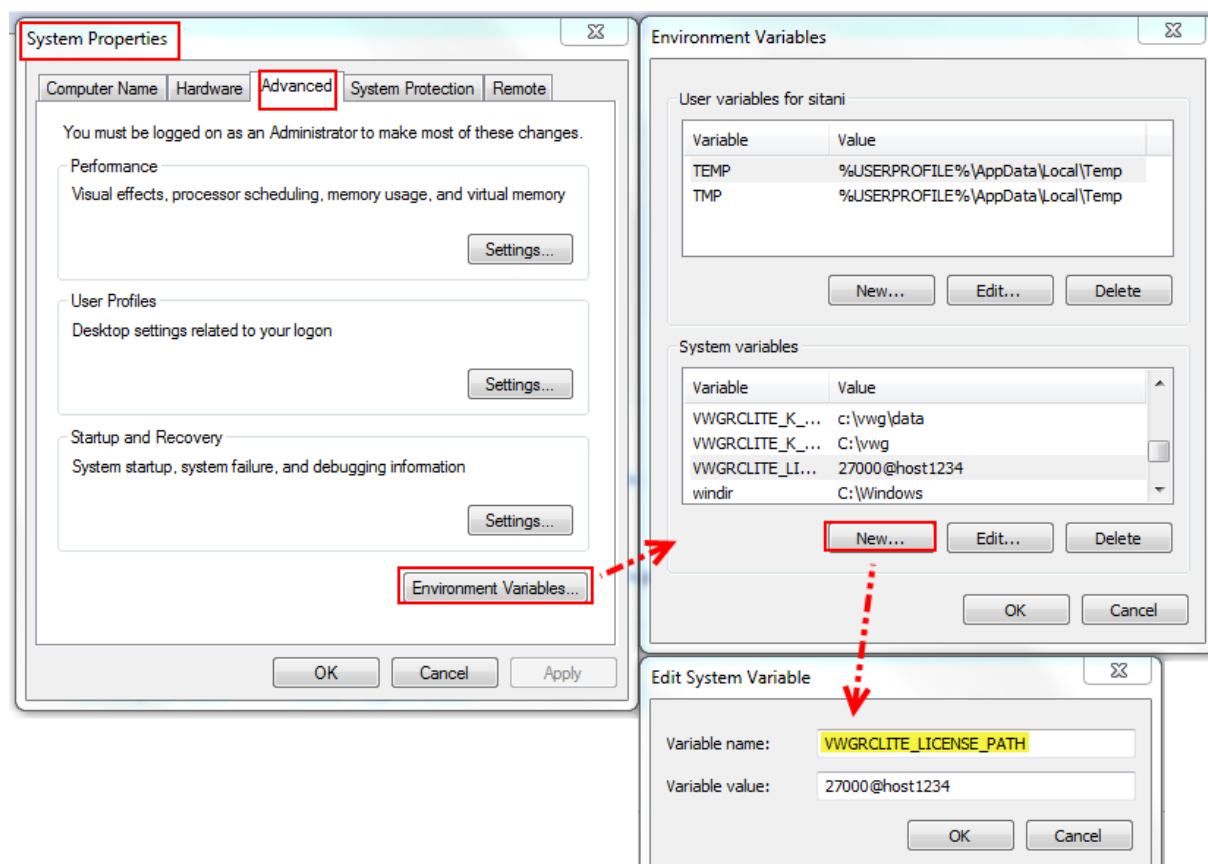


Figure 3-3 Example of setting a license definition with variable VWGRCLITE_LICENSE_PATH

4 Nodelocked License

If you have purchased a nodelocked license, you do not need to install a FlexNet server.

Note: A nodelocked license can only be used on the machine for which it was created.

Store the license file in the file system and enter the path when installing the VWGRCLite base package (in this example: C:\License\license.dat).

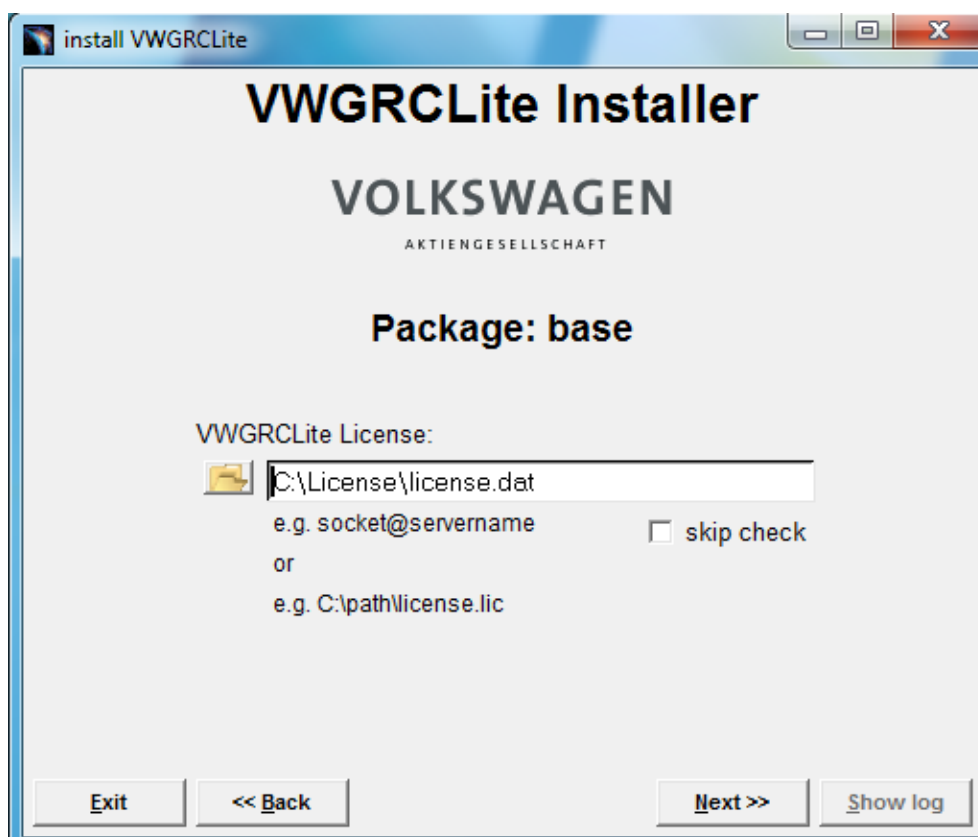


Figure 4-1 Example of a definition of a nodelocked license file during the base package installation

If you want to specify the license later (e.g., because the license is not yet active or the license file does not yet exist), you can skip the license query in the installer panel by setting the ☒ skip check option.

In this case the input field can remain empty and the license has to be configured later, see Chapters [3.1](#) and [3.3](#).

5 Note about the License File of a Server Triade

Administrators of a three-server redundancy configuration (Server Triade) will make further configurations. Please use the original documentation of the FlexNet manufacturer to configure a three-server redundancy cluster.

Firstly: Licenses for a three-server redundancy configuration are specially created, i.e., the three license servers were already specified when the license order was placed. A three-server redundancy license can be recognized by the three SERVER lines in the license file.

It is not possible to configure a three-server redundancy license from a single server floating license.

The corresponding "hostname" must be entered in the SERVER lines for each host ID.

If you use a server triple for fail-safe operation, the port must be defined. The same port number must be used in the three SERVER lines.

The configuration must be identical on all three FlexNet servers (all have the identical "license.dat" (usually as copy and not one file on one share for all)).

```

1 #Firma: XYZ
2 #Lizenz-ID: 3690178399.86
3 #=== Anfang der Lizenz ===
4 SERVER [hostname] [Physikalische Adresse] [Port]
5 SERVER [hostname] [Physikalische Adresse] [Port]
6 SERVER [hostname] [Physikalische Adresse] [Port]
7 DAEMON vwagkdoe [[PORT=]Port]
8 FEATURE CV5_RPS vwagkdoe 1.0 30-nov-2017 1 BORROW=169 SIGN="1435 C693 \
9      B12F 347C 96EC 6FCD C20A C062 25B3 F0ED 05AB 51F1 30C6 DC2B \

```

Figure 5-1 Example of parameters to be adjusted in a triple server license file

```

1 #Firma: XYZ
2 #Lizenz-ID: 3690178399.86
3 #=== Anfang der Lizenz ===
4 SERVER host001 ECF4BB1185FE 27000
5 SERVER host002 ECF4BB118555 27000
6 SERVER host003 ECF4BB118888 27000
7 DAEMON vwagkdoe PORT=27005
8 FEATURE CV5_RPS vwagkdoe 1.0 30-nov-2017 1 BORROW=169 SIGN="1435 C693 \
9      B12F 347C 96EC 6FCD C20A C062 25B3 F0ED 05AB 51F1 30C6 DC2B \

```

Figure 5-2 Sample adjustments for a triple server license.dat